

Product datasheet for **AP20355PU-N**

Caspase 9 (CASP9) Rabbit Polyclonal Antibody

Product data:

Product Type:	Primary Antibodies
Applications:	IF, IHC, WB
Recommended Dilution:	Western blot: 1/500-1/1000. Immunohistochemistry on paraffin sections: 1/50-1/200. Immunofluorescence: 1/50-1/200.
Reactivity:	Human
Host:	Rabbit
Clonality:	Polyclonal
Specificity:	This antibody detects endogenous levels of Caspase 9 protein.
Formulation:	Phosphate buffered saline (PBS) with 0.05% sodium azide, approx. pH 7.2 State: Aff - Purified State: Liquid purified Ig fraction
Concentration:	1.0 mg/ml
Purification:	Affinity-chromatography using epitope-specific immunogen; purity is > 95% (by SDS-PAGE)
Conjugation:	Unconjugated
Storage:	Store undiluted at 2-8°C for one month or (in aliquots) at -20°C for longer. Avoid repeated freezing and thawing.
Stability:	Shelf life: one year from despatch.
Predicted Protein Size:	~ 35 kDa
Gene Name:	caspase 9
Database Link:	Entrez Gene 842 Human P55211



[View online »](#)

Background:

Caspase 9 (also known as ICE like apoptotic protease 6 (ICE LAP6), apoptotic protease Mch6, and apoptotic protease activating factor 3 (Apaf3)) is a member of the peptidase family C14 that contains a CARD domain. This caspase is active as a heterotetramer and has been reported to have two isoforms. ProCaspase 9 has been reported to be approximately 47 kD. This caspase is present in the cytosol and, upon activation, translocates to the mitochondria. Caspase 9 is involved in the caspase activation cascade responsible for apoptosis execution and cleaves/activates Caspase 3 and Caspase 6. Caspase 9 is inhibited by the dominant negative isoform, BclXL, cIAP1, cIAP2, XIAP, and Livin. This caspase becomes activated when recruited to Apaf1/cytochrome c complex, and following cleavage by Apaf1, granzyme B, Caspase 3, possibly Caspase 8 and Caspase 10 into large p37 and small p10 subunits. Caspase 9 interacts with BIRC7 and has been shown to cleave PARP and vimentin.

Synonyms:

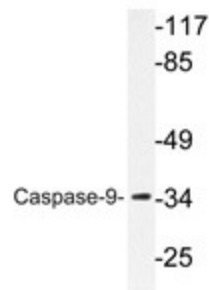
CASP-9, CASP9, MCH6, ICE-LAP6, APAF-3, APAF3

Protein Families:

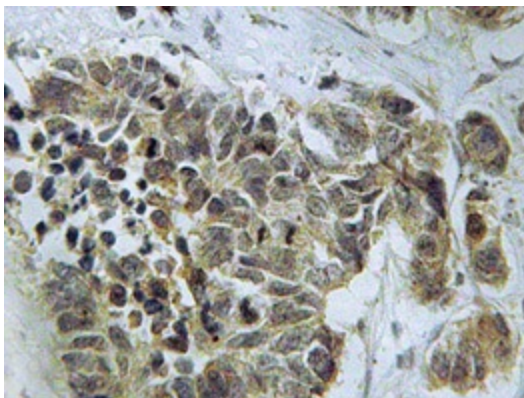
Druggable Genome, Protease, Stem cell - Pluripotency

Protein Pathways:

Alzheimer's disease, Amyotrophic lateral sclerosis (ALS), Apoptosis, Colorectal cancer, Endometrial cancer, Huntington's disease, Non-small cell lung cancer, p53 signaling pathway, Pancreatic cancer, Parkinson's disease, Pathways in cancer, Prostate cancer, Small cell lung cancer, VEGF signaling pathway, Viral myocarditis

Product images:


Western blot analysis of Caspase 9 antibody (Cat.-No.: AP20355PU-N) in extracts from HeLa cells.



Immunohistochemistry analysis of Caspase 9 antibody (Cat.-No.: AP20355PU-N) in paraffin-embedded human lung carcinoma tissue.