

Product datasheet for **AP20354PU-N**

CEBP Alpha (CEBPA) Rabbit Polyclonal Antibody

Product data:

Product Type:	Primary Antibodies
Applications:	IHC, WB
Recommended Dilution:	Western blot: 1/500-1/1000. Immunohistochemistry on paraffin sections: 1/50-1/200.
Reactivity:	Human, Mouse, Rat
Host:	Rabbit
Clonality:	Polyclonal
Specificity:	This antibody detects endogenous levels of C/EBP- α protein. (region surrounding Pro218)
Formulation:	Phosphate buffered saline (PBS), pH 7.2 State: Aff - Purified State: Liquid purified Ig fraction Preservative: 0.05% sodium azide
Concentration:	1.0 mg/ml
Purification:	Affinity-chromatography using epitope-specific immunogen; purity is > 95% (by SDS-PAGE)
Conjugation:	Unconjugated
Storage:	Store undiluted at 2-8°C for one month or (in aliquots) at -20°C for longer. Avoid repeated freezing and thawing.
Stability:	Shelf life: one year from despatch.
Predicted Protein Size:	~ 30, 43 kDa
Gene Name:	CCAAT/enhancer binding protein alpha
Database Link:	Entrez Gene 12606 Mouse Entrez Gene 24252 Rat Entrez Gene 1050 Human P49715



[View online »](#)

Background:

C/EBP α regulates gene expression in a variety of tissues including liver, adipose, lung and intestine. C/EBP α is a basic region/leucine zipper transcription factor selectively expressed during the differentiation of liver, adipose tissue, blood cells and the endocrine pancreas. C/EBP α uses a bipartite structural motif to bind DNA and appears to function exclusively in terminally differentiated, growtharrested cells. In the liver, C/EBP α is a transactivator of several genes, which are regulated by growth hormone. Growth hormone enhances not only the levels of C/EBP α mRNA and protein, but also the DNA-binding activity of C/EBP α . C/EBP α functions as an important transcription factor that regulates different genes, including Prolactin gene expression.

Synonyms:

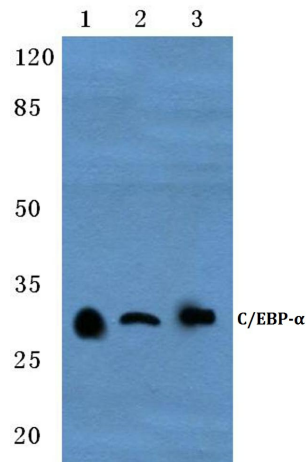
C/EBP alpha

Protein Families:

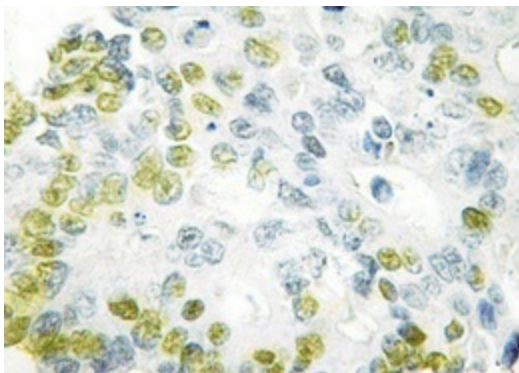
Druggable Genome, ES Cell Differentiation/IPS

Protein Pathways:

Acute myeloid leukemia, Pathways in cancer

Product images:

Western blot (WB) analysis of C/EBP-a antibody (Cat.-No.: AP20354PU-N) at 1/500 dilution Lane 1:HEK293T whole cell lysate Lane 2:Raw264.7 whole cell lysate Lane 3:PC12 whole cell lysate



Immunohistochemistry analyzes of C/EBP-a antibody (Cat.-No.: AP20354PU-N) in paraffin-embedded human colon carcinoma tissue.