

Product datasheet for **AP20353PU-N**

PKC epsilon (PRKCE) Rabbit Polyclonal Antibody

Product data:

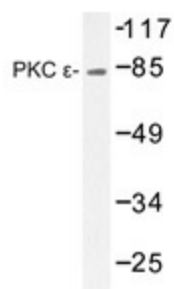
Product Type:	Primary Antibodies
Applications:	WB
Recommended Dilution:	Western blot: 1/500-1/1000.
Reactivity:	Human, Mouse, Rat
Host:	Rabbit
Clonality:	Polyclonal
Specificity:	This antibody detects endogenous levels of PKC ϵ protein.
Formulation:	Phosphate buffered saline (PBS) with 0.05% sodium azide, approx. pH 7.2 State: Aff - Purified State: Liquid purified Ig fraction
Concentration:	1.0 mg/ml
Purification:	Affinity-chromatography using epitope-specific immunogen; purity is > 95% (by SDS-PAGE)
Conjugation:	Unconjugated
Storage:	Store undiluted at 2-8°C for one month or (in aliquots) at -20°C for longer. Avoid repeated freezing and thawing.
Stability:	Shelf life: one year from despatch.
Predicted Protein Size:	~ 83 kDa
Gene Name:	protein kinase C epsilon
Database Link:	Entrez Gene 18754 Mouse Entrez Gene 29340 Rat Entrez Gene 5581 Human Q02156
Background:	Members of the protein kinase C family fall into three categories: conventional (PKC α , β I, β II, γ), novel (δ , ϵ , μ , θ), and atypical (λ , ζ). Conventional PKC isoforms are dependent on calcium and diacylglycerol (DAG) for their activity, whereas novel PKC isoforms are calcium dependent, and atypical PKC isoforms are calcium and DAG independent.
Synonyms:	PKC-epsilon, PKC epsilon, PKCE, Protein kinase C epsilon type
Protein Families:	Druggable Genome, Protein Kinase



[View online »](#)

Protein Pathways: Fc epsilon RI signaling pathway, Fc gamma R-mediated phagocytosis, Tight junction, Type II diabetes mellitus, Vascular smooth muscle contraction

Product images:



Western blot analysis of PKC e antibody (Cat.-No.: AP20353PU-N) in extracts from HeLa cells.