

## Product datasheet for **AP20344PU-N**

### CD19 Rabbit Polyclonal Antibody

#### Product data:

Product Type:	Primary Antibodies
Applications:	WB
Recommended Dilution:	<b>Western blot:</b> 1/500-1/1000.
Reactivity:	Human, Mouse, Rat
Host:	Rabbit
Clonality:	Polyclonal
Immunogen:	Synthetic peptide corresponding to amino acids 490-540 of Human CD19.
Specificity:	This antibody detects endogenous levels of CD19 protein.
Formulation:	PBS, pH~7.2 State: Aff - Purified State: Liquid purified Ig fraction Preservative: 0.05% Sodium Azide
Concentration:	1.0 mg/ml
Purification:	Affinity-chromatography using epitope-specific immunogen
Conjugation:	Unconjugated
Storage:	Store undiluted at 2-8°C for one month or (in aliquots) at -20°C for longer. Avoid repeated freezing and thawing.
Stability:	Shelf life: one year from despatch.
Predicted Protein Size:	~ 61 kDa
Gene Name:	CD19 molecule
Database Link:	<u><a href="#">Entrez Gene 12478 Mouse</a></u> <u><a href="#">Entrez Gene 365367 Rat</a></u> <u><a href="#">Entrez Gene 930 Human P15391</a></u>



[View online »](#)

**Background:**

CD19 is a transmembrane glycoprotein that contains two extracellular immunoglobulin-like domains. CD19 is selectively expressed on the cell surface of B lymphocytes, where it activates intracellular signaling cascades involving both Ras and phosphatidylinositol 3-kinase pathways. Activation of CD19 results in cross-linking of the membrane protein immunoglobulin chains and the subsequent association with Src family protein tyrosine kinases (PTK). Expression of CD19 is continuous throughout B cell development and through terminal differentiation of B cells into plasma cells. CD19 forms functional complexes with B lymphocyte surface proteins, including integrin  $\beta 1$ , CD21 and CD81, which are involved in regulating B cell development.

**Synonyms:**

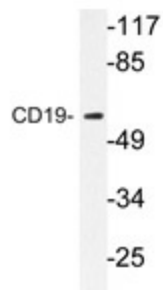
Leu-12, B-cell marker

**Protein Families:**

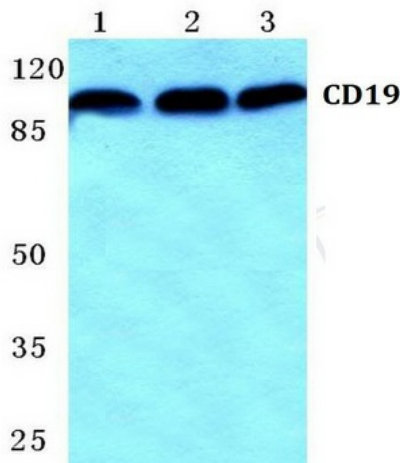
Druggable Genome, Transmembrane

**Protein Pathways:**

B cell receptor signaling pathway, Hematopoietic cell lineage, Primary immunodeficiency

**Product images:**


Western blot analysis of CD19 antibody in extracts from COS7 cells.



Western Blot analysis of CD19 antibody at 1/500 dilution: Lane 1: MCF-7 cell lysate. Lane 2: Mouse spleen tissue lysate Lane 3: Rat spleen tissue lysate.