

## Product datasheet for **AP20341PU-N**

### **c Abl (ABL1) Rabbit Polyclonal Antibody**

#### **Product data:**

Product Type:	Primary Antibodies
Applications:	IHC, WB
Recommended Dilution:	<b>Western blot:</b> 1/500-1/1000. <b>Immunohistochemistry on paraffin sections:</b> 1/50-1/200.
Reactivity:	Human, Mouse, Rat
Host:	Rabbit
Clonality:	Polyclonal
Specificity:	This antibody detects endogenous levels of Abl protein.
Formulation:	Phosphate buffered saline (PBS) with 0.05% sodium azide, approx. pH 7.2 State: Aff - Purified State: Liquid purified Ig fraction
Concentration:	1.0 mg/ml
Purification:	Affinity-chromatography using epitope-specific immunogen; purity is > 95% (by SDS-PAGE)
Conjugation:	Unconjugated
Storage:	Store undiluted at 2-8°C for one month or (in aliquots) at -20°C for longer. Avoid repeated freezing and thawing.
Stability:	Shelf life: one year from despatch.
Predicted Protein Size:	~ 123 kDa
Gene Name:	ABL proto-oncogene 1, non-receptor tyrosine kinase
Database Link:	<a href="#">Entrez Gene 11350 Mouse</a> <a href="#">Entrez Gene 311860 Rat</a> <a href="#">Entrez Gene 25 Human P00519</a>
Background:	The c Abl proto oncogene encodes a protein tyrosine kinase that is located in the cytoplasm and nucleus. In chronic myelogenous leukemia and in a subset of acute lymphoblastic leukemias, the c Abl proto oncogene undergoes a (9;22) chromosomal translocation producing a novel rearranged chromosome (the Philadelphia chromosome) As the result of the fusion of c Abl sequences from chromosome 9 to the Bcr gene on chromosome 22. The molecular consequence of this translocation is the generation of a chimeric Bcr/Abl mRNA encoding activated Abl protein tyrosine kinase.



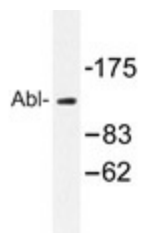
[View online »](#)

**Synonyms:** c-ABL, p150, JTK7, bcr/abl

**Protein Families:** Druggable Genome, Protein Kinase, Transcription Factors

**Protein Pathways:** Axon guidance, Cell cycle, Chronic myeloid leukemia, ErbB signaling pathway, Neurotrophin signaling pathway, Pathogenic Escherichia coli infection, Pathways in cancer, Viral myocarditis

**Product images:**



Western blot analysis of Abl antibody (Cat.-No.: AP20341PU-N) in extracts from COS7 cells.