

## Product datasheet for **AP20337PU-N**

### Integrin beta 4 (ITGB4) Rabbit Polyclonal Antibody

#### Product data:

Product Type:	Primary Antibodies
Applications:	IHC, WB
Recommended Dilution:	<b>Western blot:</b> 1/500-1/1000. <b>Immunohistochemistry on paraffin sections:</b> 1/50-1/200.
Reactivity:	Human, Mouse, Rat
Host:	Rabbit
Clonality:	Polyclonal
Specificity:	This antibody detects endogenous levels of Integrin $\beta$ 4 protein.
Formulation:	Phosphate buffered saline (PBS) with 0.05% sodium azide, approx. pH 7.2 State: Aff - Purified State: Liquid purified Ig fraction
Concentration:	1.0 mg/ml
Purification:	Affinity-chromatography using epitope-specific immunogen; purity is > 95% (by SDS-PAGE)
Conjugation:	Unconjugated
Storage:	Store undiluted at 2-8°C for one month or (in aliquots) at -20°C for longer. Avoid repeated freezing and thawing.
Stability:	Shelf life: one year from despatch.
Predicted Protein Size:	~ 202 kDa
Gene Name:	integrin subunit beta 4
Database Link:	<a href="#">Entrez Gene 25724 Rat</a> <a href="#">Entrez Gene 192897 Mouse</a> <a href="#">Entrez Gene 3691 Human P16144</a>



[View online »](#)

**Background:**

Integrins are heterodimers composed of noncovalently associated transmembrane  $\alpha$  and  $\beta$  subunits. The 16  $\alpha$  and 8  $\beta$  subunits heterodimerize to produce more than 20 different receptors. Most integrin receptors bind ligands that are components of the extracellular matrix, including Fibronectin, collagen and Vitronectin. Certain integrins can also bind to soluble ligands such as Fibrinogen, or to counterreceptors on adjacent cells such as the intracellular adhesion molecules (ICAMs), leading to aggregation of cells. Ligands serve to cross-link or cluster integrins by binding to adjacent integrin receptors; both receptor clustering and ligand occupancy are necessary for the activation of integrin-mediated responses. In addition to mediating cell adhesion and cytoskeletal organization, integrins function as signaling receptors. Signals transduced by integrins play a role in many biological processes, including cell growth, differentiation, migration and apoptosis.

**Synonyms:**

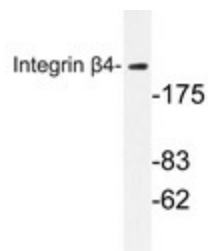
ITGB4, GP150

**Protein Families:**

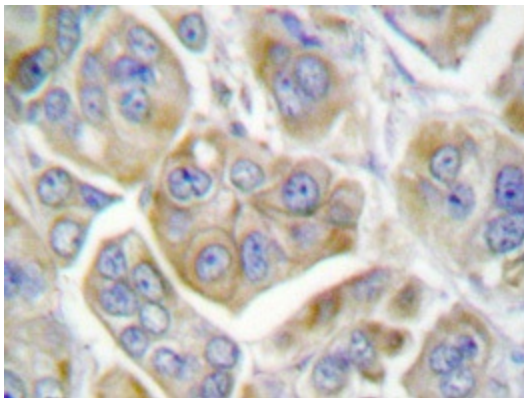
Druggable Genome

**Protein Pathways:**

Arrhythmogenic right ventricular cardiomyopathy (ARVC), Dilated cardiomyopathy, ECM-receptor interaction, Focal adhesion, Hypertrophic cardiomyopathy (HCM), Regulation of actin cytoskeleton

**Product images:**


Western blot analysis of Integrin  $\beta$ 4 antibody (Cat.-No.: AP20337PU-N) in extracts from HepG2 cells.



Immunohistochemistry analyzes of Integrin  $\beta$ 4 antibody (Cat.-No.: AP20337PU-N) in paraffin-embedded human breast carcinoma tissue.