

## Product datasheet for **AP20336PU-N**

### SMAD3 Rabbit Polyclonal Antibody

#### Product data:

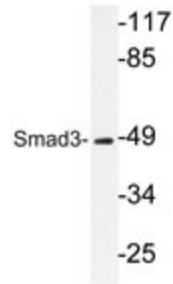
Product Type:	Primary Antibodies
Applications:	IHC, WB
Recommended Dilution:	<b>Western blot:</b> 1/500-1/1000. <b>Immunohistochemistry on paraffin sections</b> 1/50-1/200.
Reactivity:	Human, Mouse, Rat
Host:	Rabbit
Clonality:	Polyclonal
Specificity:	This antibody detects endogenous levels of Smad3 protein.
Formulation:	Phosphate buffered saline (PBS) with 0.05% sodium azide, approx. pH 7.2 State: Aff - Purified State: Liquid purified Ig fraction
Concentration:	1.0 mg/ml
Purification:	Affinity-chromatography using epitope-specific immunogen; purity is > 95% (by SDS-PAGE).
Conjugation:	Unconjugated
Storage:	Store undiluted at 2-8°C for one month or (in aliquots) at -20°C for longer. Avoid repeated freezing and thawing.
Stability:	Shelf life: one year from despatch.
Predicted Protein Size:	~ 55 kDa
Gene Name:	SMAD family member 3
Database Link:	<a href="#">Entrez Gene 17127 Mouse</a> <a href="#">Entrez Gene 25631 Rat</a> <a href="#">Entrez Gene 4088 Human P84022</a>



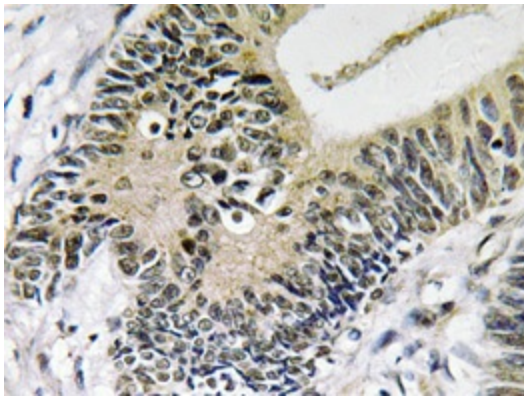
[View online »](#)

- Background:** Smad proteins, the mammalian homologs of the Drosophilamothers against dpp (Mad) have been implicated as downstream effectors of TGF $\beta$ /BMP signaling. Smad1 (also designated Madr1 or JV4-1), Smad5 and mammalian Smad8 (also designated Smad9 or MadH6) are effectors of BMP-2 and BMP-4 function while Smad2 (also designated Madr2 or JV18-1) and Smad3 are involved in TGF $\beta$  and Activin-mediated growth modulation. Smad4 (also designated DPC4) has been shown to mediate all of the above activities through interaction with various Smad family members. Smad6 and Smad7 regulate the response to Activin/TGF $\beta$  signaling by interfering with TGF $\beta$ -mediated phosphorylation of other Smad family members.
- Synonyms:** SMAD family member 3, SMAD 3, SMAD-3, Mad3, MAD-3, MADH3, MAD homolog 3, JV15-2
- Protein Families:** Cancer stem cells, Druggable Genome, Embryonic stem cells, ES Cell Differentiation/IPS, Stem cell relevant signaling - JAK/STAT signaling pathway, Stem cell relevant signaling - TGF $\beta$ /BMP signaling pathway, Transcription Factors
- Protein Pathways:** Adherens junction, Cell cycle, Chronic myeloid leukemia, Colorectal cancer, Pancreatic cancer, Pathways in cancer, TGF-beta signaling pathway, Wnt signaling pathway

### Product images:



Western blot analysis of Smad3 antibody (Cat.-No.: AP20336PU-N) in extracts from HT-29 cells.



Immunohistochemistry analyzes of Smad3 antibody (Cat.-No.: AP20336PU-N) in paraffin-embedded human colon carcinoma tissue.