

## Product datasheet for **AP20333PU-M**

### DAPP1 Rabbit Polyclonal Antibody

#### Product data:

Product Type:	Primary Antibodies
Applications:	IHC, WB
Recommended Dilution:	<b>Western Blot:</b> 1/500-1/1000. <b>Immunohistochemistry on Paraffin Sections:</b> 1/50-1/200.
Reactivity:	Human, Mouse
Host:	Rabbit
Clonality:	Polyclonal
Specificity:	This antibody detects endogenous levels of DAPP1 protein.
Formulation:	Phosphate buffered saline (PBS), pH~7.2 State: Aff - Purified State: Liquid purified Ig fraction (> 95% pure by SDS-PAGE). Preservative: 0.05% Sodium Azide
Concentration:	1.0 mg/ml
Purification:	Affinity Chromatography using epitope-specific immunogen.
Conjugation:	Unconjugated
Storage:	Store the antibody undiluted at 2-8°C for one month or (in aliquots) at -20°C for longer. Avoid repeated freezing and thawing.
Stability:	Shelf life: one year from despatch.
Predicted Protein Size:	~32 kDa
Gene Name:	dual adaptor of phosphotyrosine and 3-phosphoinositides 1
Database Link:	<a href="#">Entrez Gene 26377 Mouse</a> <a href="#">Entrez Gene 27071 Human</a> <a href="#">Q9UN19</a>



[View online »](#)

**Background:**

B cell adapter molecule (BAM32) is also designated a dual adapter for phosphotyrosine and 3-phosphotyrosine, and 3-phosphoinositide (DAPP1) or B lymphocyte adapter protein. BAM32 is a B cell-associated adapter that is crucial for B cell antigen receptor signaling regulation. BAM32 interacts with PtdIns and PLC  $\gamma$ 2 and, upon B cell activation, the protein is phosphorylated on tyrosine residues. It is a mainly cytoplasmic protein that can translocate to the cell membrane after cell stimulation. BAM32, which contains one PH domain and one SH2 domain, is primarily expressed in placenta and lung tissues, but can also be detected in heart, liver, pancreas and brain.

**Synonyms:**

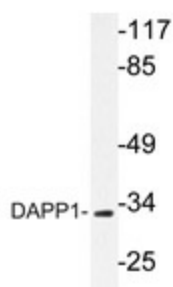
BAM32, HSPC066, DKFZp667E0716, hDAPP1

**Protein Families:**

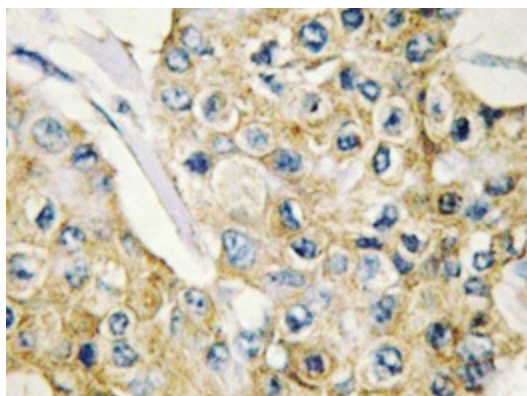
Druggable Genome, Phosphatase

**Protein Pathways:**

B cell receptor signaling pathway

**Product images:**


Western blot analysis of DAPP1 antibody (Cat.-No.: [AP20333PU-N]) in extracts from 293 cells.



Immunohistochemistry analyzes of DAPP1 antibody (Cat.-No.: [AP20333PU-N]) in paraffin-embedded human breast carcinoma tissue.