

Product datasheet for **AP20329PU-S**

14-3-3 theta (YWHAQ) Rabbit Polyclonal Antibody

Product data:

Product Type:	Primary Antibodies
Applications:	IF, IHC, WB
Recommended Dilution:	Western Blot: 1/500-1/1000. Immunofluorescence: 1/50-1/200. Immunohistochemistry on Paraffin Sections: 1/50-1/200.
Reactivity:	Mouse, Rat
Host:	Rabbit
Clonality:	Polyclonal
Immunogen:	Synthetic peptide, corresponding to amino acids 200-240 of Human 14-3-3 θ .
Specificity:	This antibody detects endogenous levels of 14-3-3 θ/τ protein.
Formulation:	Phosphate buffered saline (PBS), pH~7.2 State: Aff - Purified State: Liquid purified Ig fraction (> 95% pure by SDS-PAGE) Preservative: 0.05% Sodium Azide
Concentration:	1.0 mg/ml
Purification:	Affinity Chromatography using epitope-specific immunogen
Conjugation:	Unconjugated
Storage:	Store undiluted at 2-8°C for one month or (in aliquots) at -20°C for longer. Avoid repeated freezing and thawing.
Stability:	Shelf life: one year from despatch.
Predicted Protein Size:	~28 kDa
Gene Name:	tyrosine 3-monooxygenase/tryptophan 5-monooxygenase activation protein theta
Database Link:	Entrez Gene 22630 Mouse Entrez Gene 25577 Rat P27348



[View online »](#)

Background:

It is a member of the 14-3-3 family which consists of 30 kDa proteins that are involved in multiple cell signalling pathways, regulation of cell cycle progression, cytoskeletal structure, transcription, intracellular trafficking and targeting. Protein interactions with 14-3-3 show distinct preferences for its different isoforms and are regulated by phosphorylation of both 14-3-3 and the bound protein. 14-3-3 tau/theta is primarily expressed in T-cells although it occurs at lower levels in the brain, heart, pancreas placenta and kidneys. It plays a role in cell cycle progression via interaction with p27(Kip1). Along with COPI, the theta isoform binds the GB1 RSR sequence involved in protein trafficking. The isoform forms a complex with Hsp60 and cellular prion protein which may be involved in prion diseases. Elevated levels of 14-3-3 tau/theta are observed in amyotrophic lateral sclerosis. 14-3-3 tau/theta also binds BCR/Abl, bacterial effector protein Tir, yes-associated protein and the FSH receptor.

Synonyms:

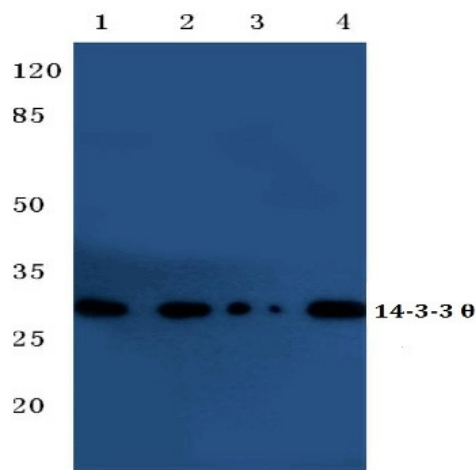
14-3-3 protein tau, 14-3-3 protein T-cell, YWHAQ, Protein HS1

Protein Families:

Druggable Genome

Protein Pathways:

Cell cycle, Neurotrophin signaling pathway, Oocyte meiosis, Pathogenic Escherichia coli infection

Product images:

Western blot analysis of 14-3-3 theta antibody at 1/500 dilution: Lane 1: HeLa cell lysate. Lane 2: sp2/0 cell lysate. Lane 3: H9C2 cell lysate.