

Product datasheet for **AP20328PU-N**

Rasgrf1 Rabbit Polyclonal Antibody

Product data:

Product Type:	Primary Antibodies
Applications:	IHC
Recommended Dilution:	Immunohistochemistry on paraffin sections 1/50-1/200.
Reactivity:	Mouse, Rat
Host:	Rabbit
Clonality:	Polyclonal
Specificity:	This antibody detects endogenous levels of Ras-GRF1 protein.
Formulation:	Phosphate buffered saline (PBS) with 0.05% sodium azide, approx. pH 7.2 State: Aff - Purified State: Liquid purified Ig fraction
Concentration:	1.0 mg/ml
Purification:	Affinity-chromatography using epitope-specific immunogen; purity is > 95% (by SDS-PAGE)
Conjugation:	Unconjugated
Storage:	Store undiluted at 2-8°C for one month or (in aliquots) at -20°C for longer. Avoid repeated freezing and thawing.
Stability:	Shelf life: one year from despatch.
Gene Name:	RAS protein-specific guanine nucleotide-releasing factor 1
Database Link:	<u>Entrez Gene 192213 Rat</u> <u>Entrez Gene 19417 Mouse</u> <u>P27671</u>

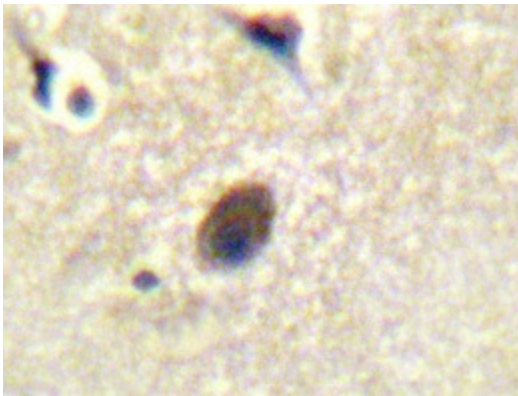
[View online »](#)

Background:

A critical step in signal transduction responses to stimulation of cell surface receptors by their ligands involves the accumulation of Ras proteins in their active GTP-bound state. To reach their active GTP-bound state, Ras proteins must first release bound GDP, a rate limiting step mediated by a guanine nucleotide releasing factor (GRF). The mammalian Ras p21 GRF protein has been designated Ras-GRF1 p140. Ras-GRF1 accelerates release of GDP from H- and N-Ras p21 protein in vitro, but not from the related Ral A or Cdc42Hs GTP-binding proteins. Of interest, a region mapping within the amino terminal domain of Ras-GRF1 is similar to both the human breakpoint cluster protein, Bcr, and the Dbl proto-oncogene product, a guanine nucleotide-releasing factor for Cdc42Hs. Ras-GRF2 p135 has also been identified. Ras-GRF2 p135 is highly homologous to Ras-GRF1 p140 except in the region between the REM and CDC25 domains and appears to function similarly to Ras-GRF1 p140.

Synonyms:

Ras-GRF1, GRF1, GNRP, CDC25

Product images:


Immunohistochemistry analyzes of Ras-GRF1 antibody (Cat.-No.: AP20328PU-N) in paraffin-embedded human brain tissue.