

## Product datasheet for **AP20323PU-M**

### **RSK1 p90 (RPS6KA1) Rabbit Polyclonal Antibody**

#### **Product data:**

Product Type:	Primary Antibodies
Applications:	IF, IHC, WB
Recommended Dilution:	<b>Western blot:</b> 1/500-1/1000. <b>Immunohistochemistry on paraffin sections:</b> 1/50-1/200. <b>Immunofluorescence:</b> 1/50-1/200.
Reactivity:	Human, Mouse, Rat
Host:	Rabbit
Clonality:	Polyclonal
Specificity:	This antibody detects endogenous levels of Rsk-1 protein.
Formulation:	Phosphate buffered saline (PBS) with 0.05% sodium azide, approx. pH 7.2 State: Aff - Purified State: Liquid purified Ig fraction
Concentration:	1.0 mg/ml
Purification:	Affinity-chromatography using epitope-specific immunogen; purity is > 95% (by SDS-PAGE)
Conjugation:	Unconjugated
Storage:	Store undiluted at 2-8°C for one month or (in aliquots) at -20°C for longer. Avoid repeated freezing and thawing.
Stability:	Shelf life: one year from despatch.
Predicted Protein Size:	~ 83 kDa
Gene Name:	ribosomal protein S6 kinase A1
Database Link:	<a href="#">Entrez Gene 20111 Mouse</a> <a href="#">Entrez Gene 81771 Rat</a> <a href="#">Entrez Gene 6195 Human</a> <a href="#">Q15418</a>



[View online »](#)

**Background:**

Inhibition of protein phosphatase 2A (PP2A) activity has been identified as a prerequisite for the transformation of human cells. The protein, designated Cancerous Inhibitor of PP2A (CIP2A, p90 Autoantigen), interacts directly with the oncogenic transcription factor c-Myc, inhibits PP2A activity toward c-Myc serine 62 (S62), and thereby prevents c-Myc proteolytic degradation. In addition to its function in c-Myc stabilization, p90 Autoantigen promotes anchorage-independent cell growth and in vivo tumor formation. The oncogenic activity of p90 Autoantigen is demonstrated by transformation of human cells by overexpression of p90 Autoantigen. Importantly, p90 Autoantigen is overexpressed in two common human malignancies, head and neck squamous cell carcinoma (HNSCC) and colon cancer.

**Synonyms:**

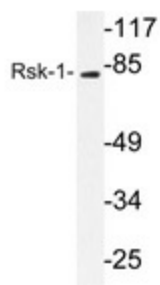
Ribosomal S6 kinase 1, 90 kDa ribosomal protein S6 kinase 1, MAPKAPK1A, RSK1, RSK-1, p90RSK1

**Protein Families:**

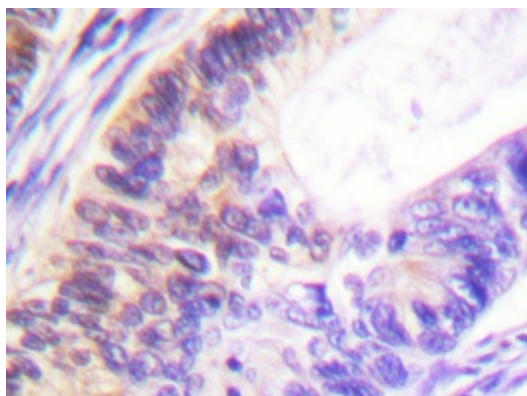
Druggable Genome, Protein Kinase

**Protein Pathways:**

Long-term potentiation, MAPK signaling pathway, mTOR signaling pathway, Neurotrophin signaling pathway, Oocyte meiosis, Progesterone-mediated oocyte maturation

**Product images:**


Western blot analysis of Rsk-1 antibody ([AP20323PU-NJ]) in extracts from 3T3 cells.



Immunohistochemistry analyzes of Rsk-1 antibody ([AP20323PU-NJ]) in paraffin-embedded human colon carcinoma tissue.