

Product datasheet for **AP20322PU-M**

FGFR1 Rabbit Polyclonal Antibody

Product data:

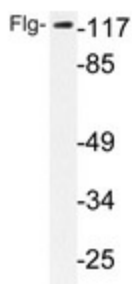
Product Type:	Primary Antibodies
Applications:	IHC, WB
Recommended Dilution:	Western blot: 1/500-1/1000. Immunohistochemistry on Paraffin Sections: 1/50-1/200.
Reactivity:	Human, Mouse, Rat
Host:	Rabbit
Clonality:	Polyclonal
Specificity:	This antibody detects endogenous levels of Flg protein.
Formulation:	Phosphate buffered saline (PBS), pH~7.2 with 0.05% Sodium Azide as preservative. State: Aff - Purified State: Liquid purified Ig fraction (> 95% pure by SDS-PAGE).
Concentration:	1.0 mg/ml
Purification:	Affinity Chromatography using epitope-specific immunogen.
Conjugation:	Unconjugated
Storage:	Store undiluted at 2-8°C for one month or (in aliquots) at -20°C for longer. Avoid repeated freezing and thawing.
Stability:	Shelf life: one year from despatch.
Predicted Protein Size:	~ 120,145 kDa
Gene Name:	fibroblast growth factor receptor 1
Database Link:	Entrez Gene 14182 Mouse Entrez Gene 79114 Rat Entrez Gene 2260 Human P11362



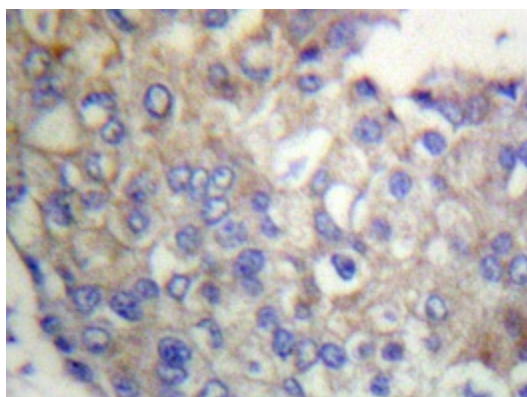
[View online »](#)

Background:	FGFR1 (fibroblast growth factor receptor 1) is a member of the fibroblast growth factor receptor family containing an Ig-like domain and a tyrosine kinase domain. This receptor has multiple isoforms and is a Type I membrane protein. FGFR1 is a widely expressed membrane receptor, with distinct isoforms expressed in specific tissues. FGFR1 binds fibroblast growth factor and induces mitogenesis and cellular differentiation. Defects in FGFR1 result in Pfeiffer syndrome associated with craniosynostosis. FGFR1 can be modified by phosphorylation and can bind basic/acidic fibroblast factor depending on the receptor isoform. FGFR1 has been shown to interact with N-cadherin and NCAM.
Synonyms:	BFGFR, CEK, FGFBR, FLG, FLT2, HBGFR, BFGFR, bFGF-R-1, FLT-2, N-sam, Proto-oncogene c-Fgr
Protein Families:	Druggable Genome, Protein Kinase, Transmembrane
Protein Pathways:	Adherens junction, MAPK signaling pathway, Melanoma, Pathways in cancer, Prostate cancer, Regulation of actin cytoskeleton

Product images:



Western blot analysis of Flg antibody (Cat.-No.: [AP20322PU-N]) in extracts from HepG2 cells.



Immunohistochemistry analyzes of Flg antibody (Cat.-No.: [AP20322PU-N]) in paraffin-embedded human breast carcinoma tissue.