

## Product datasheet for **AP20317PU-N**

### SSB Rabbit Polyclonal Antibody

#### Product data:

Product Type:	Primary Antibodies
Applications:	IHC, WB
Recommended Dilution:	<b>Western blot:</b> 1/500-1/1000. <b>Immunohistochemistry on paraffin sections</b> 1/50-1/200.
Reactivity:	Human
Host:	Rabbit
Clonality:	Polyclonal
Immunogen:	Synthetic peptide, corresponding to amino acids 331-380 of Human SSB.
Specificity:	This antibody detects endogenous levels of SSB protein.
Formulation:	PBS with 0.02% Sodium Azide, 50% glycerol, pH7.2 State: Aff - Purified State: Liquid purified Ig fraction
Concentration:	1.0 mg/ml
Purification:	Affinity-chromatography using epitope-specific immunogen; purity is > 95% (by SDS-PAGE)
Conjugation:	Unconjugated
Storage:	Store undiluted at 2-8°C for one month or (in aliquots) at -20°C for longer. Avoid repeated freezing and thawing.
Stability:	Shelf life: one year from despatch.
Predicted Protein Size:	~ 50 kDa
Gene Name:	Sjogren syndrome antigen B
Database Link:	<a href="#">Entrez Gene 6741 Human P05455</a>



[View online »](#)

**Background:**

Members of the suppressor of cytokine signaling (SOCS) family of proteins contain C-terminal regions of homology called the SOCS box, which serves to couple SOCS proteins and their binding partners with the Elongin B and C complex, thereby mediating protein degradation. Several other families of proteins also contain SOCS boxes, but differ from the SOCS proteins in the type of domain they contain upstream of the SOCS box. SSB-2 (Spr1A/ryanodine (SPRY) receptor domain-containing SOCS box protein 2), also known as GGRCC9 (gene-rich cluster protein C9), SPSB2 or MGC2519, is a cytoplasmic protein belonging to the SPSB family of proteins that contain a central SPRY domain and a C-terminal SOCS box. The SPRY domain is believed to be a protein-protein interaction motif. Members of the SPSB family are capable of interacting with Met (a receptor for hepatocyte growth factors (HGFs)), and SSB-1 is known to promote HGF signaling. SSB-1, SSB-2 and SSB-4 are also able to interact with PAR4 (prostate apoptosis response protein 4). Mutations in the genes encoding SPSB proteins are associated with several human diseases.

**Synonyms:**

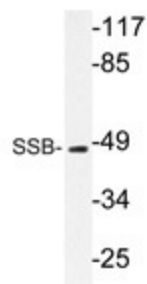
SSB, Sjogren syndrome type B antigen, Lupus La protein, La ribonucleoprotein, La autoantigen, LARP3

**Protein Families:**

Stem cell - Pluripotency, Transcription Factors

**Protein Pathways:**

Systemic lupus erythematosus

**Product images:**

Western blot analysis of SSB antibody (Cat.-No.: AP20317PU-N) in extracts from 293 cells.