

## Product datasheet for **AP20309PU-N**

### IL2 Receptor alpha (IL2RA) Rabbit Polyclonal Antibody

#### Product data:

Product Type:	Primary Antibodies
Applications:	IF, WB
Recommended Dilution:	<b>Western blot:</b> 1/500-1/1000. <b>Immunofluorescence:</b> 1/50-1/200.
Reactivity:	Human
Host:	Rabbit
Clonality:	Polyclonal
Specificity:	This antibody detects endogenous levels of IL-2R $\alpha$ protein.
Formulation:	Phosphate buffered saline (PBS), pH~7.2 with 0.05% Sodium Azide as preservative. State: Aff - Purified State: Liquid purified Ig fraction (> 95% pure by SDS-PAGE).
Concentration:	1.0 mg/ml
Purification:	Affinity Chromatography using epitope-specific immunogen.
Conjugation:	Unconjugated
Storage:	Store the antibody undiluted at 2-8°C for one month or (in aliquots) at -20°C for longer. Avoid repeated freezing and thawing.
Stability:	Shelf life: one year from despatch.
Predicted Protein Size:	~55 kDa
Gene Name:	interleukin 2 receptor subunit alpha
Database Link:	<a href="#">Entrez Gene 3559 Human P01589</a>
Background:	The Interleukin 2 Receptor alpha and beta chains, together with the common gamma chain, constitute the high affinity IL2 receptor present on activated T and B cells, thymocyte subset, pre B cells and T regulatory cells. Homodimeric alpha chains result in low affinity receptor, while homodimeric beta chains produce a medium affinity receptor. Normally an integral membrane protein, soluble IL2 Receptor alpha has been isolated and determined to result from extracellular proteolysis. Alternately spliced IL2 Receptor alpha mRNAs have been isolated, but the significance of each is presently unknown.



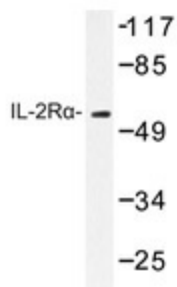
[View online »](#)

**Synonyms:** Interleukin-2 receptor alpha chain, IL-2 receptor alpha subunit, IL-2-RA, IL2-RA, p55, TAC antigen

**Protein Families:** Druggable Genome, ES Cell Differentiation/IPS, Transmembrane

**Protein Pathways:** Cytokine-cytokine receptor interaction, Endocytosis, Hematopoietic cell lineage, Jak-STAT signaling pathway

### Product images:



Western blot analysis of IL-2Ra antibody (AP20309PU-N) in extracts from LOVO cells.