

## Product datasheet for **AP20306PU-N**

### IGF2R Rabbit Polyclonal Antibody

#### Product data:

Product Type:	Primary Antibodies
Applications:	IF, IHC
Recommended Dilution:	<b>Immunofluorescence:</b> 1/50-1/200. <b>Immunohistochemistry on Paraffin Sections:</b> 1/50-1/200.
Reactivity:	Human, Mouse, Rat
Host:	Rabbit
Clonality:	Polyclonal
Specificity:	This antibody detects endogenous levels of IGF-2R protein. (region surrounding Phe2480)
Formulation:	PBS, pH~7.2 State: Aff - Purified State: Liquid purified Ig fraction (> 95% pure by SDS-PAGE) Preservative: 0.05% Sodium Azide
Concentration:	1.0 mg/ml
Purification:	Affinity Chromatography using epitope-specific immunogen
Conjugation:	Unconjugated
Storage:	Store undiluted at 2-8°C for one month or (in aliquots) at -20°C for longer. Avoid repeated freezing and thawing.
Stability:	Shelf life: one year from despatch.
Predicted Protein Size:	~ 274 kDa
Gene Name:	insulin like growth factor 2 receptor
Database Link:	<u><a href="#">Entrez Gene 16004 Mouse</a></u> <u><a href="#">Entrez Gene 25151 Rat</a></u> <u><a href="#">Entrez Gene 3482 Human</a></u> <u><a href="#">P11717</a></u>



[View online »](#)

**Background:**

The mannose 6-phosphate/insulin-like growth factor II receptor, IGF-IIR (also designated M6P/IGF2R), is an ubiquitously expressed integral glycoprotein. By binding glycoproteins through two of its extracytoplasmic domains, IGF-IIR mediates the activation of TGF $\beta$ 1 (a growth inhibitor), the degradation of IGF-II and the transport of lysosomal enzymes. Subsequently, IGF-IIR can form oligomeric complexes, which increase the affinity of IGF-IIR for lysosomal enzymes. Unlike IGF-IR, IGF-IIR does not potentiate the signaling of IGF-I or IGF-II, which have mitogenic, cell survival and insulin-like effects. Therefore, IGF-IIR is characterized as a tumor suppressor. Furthermore, the IGF-IIR gene is located on chromosome 6q26, which is commonly mutated or deleted in several human cancers.

**Synonyms:**

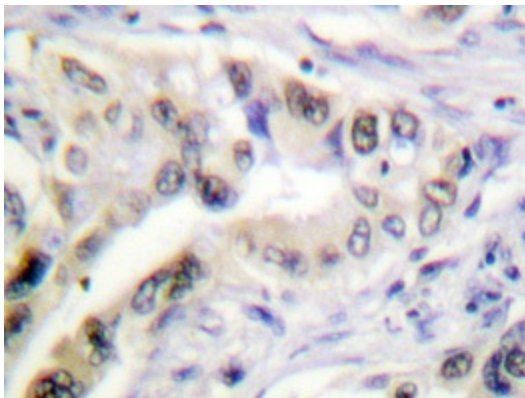
CI-MPR, Insulin-like growth factor 2 receptor, Insulin-like growth factor II receptor, M6P/IGF2 receptor, CI Man-6-P receptor, M6PR, Late Endosome Marker, M6P/IGF2R, MPR 300

**Protein Families:**

Druggable Genome, Transmembrane

**Protein Pathways:**

Lysosome

**Product images:**

Immunohistochemistry analysis of IGF-2R antibody (Cat.-No AP20306PU-N) in paraffin-embedded human lung carcinoma tissue.