

## Product datasheet for **AP20303PU-M**

### GRB10 Rabbit Polyclonal Antibody

#### Product data:

Product Type:	Primary Antibodies
Applications:	IF, IHC, WB
Recommended Dilution:	<b>Western blot:</b> 1/500-1/1000. <b>Immunohistochemistry on paraffin sections:</b> 1/50-1/200. <b>Immunofluorescence:</b> 1/50-1/200.
Reactivity:	Human
Host:	Rabbit
Clonality:	Polyclonal
Specificity:	This antibody detects endogenous levels of GRB10 protein. (region surrounding Leu63)
Formulation:	Phosphate buffered saline (PBS) with 0.05% sodium azide, approx. pH 7.2 State: Aff - Purified State: Liquid purified Ig fraction (95% pure by SDS-PAGE)
Concentration:	1.0 mg/ml
Purification:	Affinity-chromatography using epitope-specific immunogen
Conjugation:	Unconjugated
Storage:	Store undiluted at 2-8°C for one month or (in aliquots) at -20°C for longer. Avoid repeated freezing and thawing.
Stability:	Shelf life: one year from despatch.
Predicted Protein Size:	~ 60-67 kDa
Gene Name:	growth factor receptor bound protein 10
Database Link:	<a href="#">Entrez Gene 2887 Human</a> <a href="#">Q13322</a>

[View online »](#)

**Background:**

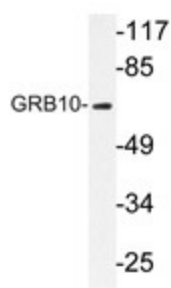
Many growth factors function by binding receptors with intrinsic tyrosine kinase activity. Signaling by such receptors involves a series of intermediates characterized by SH2 domains that bind tyrosine phosphorylated receptors by a direct interaction between the SH2 domain and specific phosphotyrosine- containing receptor sequences. GRB7, a SH2 domain protein, has a single SH2 domain at its C-terminal, a central region with similarity to Ras GAP, and a proline-rich N terminus. A related SH2 domain-containing protein, GRB10, exhibits a high degree of homology with GRB7. GRB10 undergoes serine but not tyrosine phosphorylation in response to EGF treatment, but appears to bind to the EGF receptor poorly. GRB10 maps to mouse chromosome 11, in close proximity to the EGF receptor. Similarly, GRB7 maps to the same mouse chromosome near the EGF receptor-related protein HER2.

**Synonyms:**

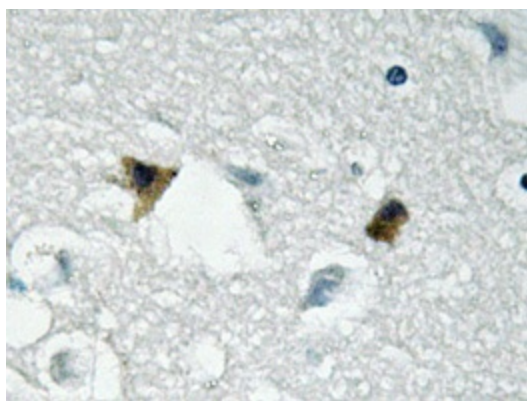
Grb-IR, KIAA0207

**Protein Families:**

Druggable Genome

**Product images:**


Western blot analysis of GRB10 antibody (Cat.-No.: [AP20303PU-N]) in extracts from NIH/3T3 cells.



Immunohistochemistry analyzes of GRB10 antibody (Cat.-No.: [AP20303PU-N]) in paraffin-embedded human brain tissue.