

Product datasheet for **AP20302PU-N**

GATA4 Rabbit Polyclonal Antibody

Product data:

Product Type:	Primary Antibodies
Applications:	IF, IHC, WB
Recommended Dilution:	Western blot: 1/500-1/1000. Immunohistochemistry on paraffin sections: 1/50-1/200. Immunofluorescence: 1/50-1/200.
Reactivity:	Human, Mouse, Rat
Host:	Rabbit
Clonality:	Polyclonal
Specificity:	This antibody detects endogenous levels of GATA4 protein. (region surrounding Pro101)
Formulation:	Phosphate buffered saline (PBS) with 0.05% sodium azide, approx. pH 7.2 State: Aff - Purified State: Liquid purified Ig fraction
Concentration:	1.0 mg/ml
Purification:	Affinity-chromatography using epitope-specific immunogen; purity is > 95% (by SDS-PAGE)
Conjugation:	Unconjugated
Storage:	Store undiluted at 2-8°C for one month or (in aliquots) at -20°C for longer. Avoid repeated freezing and thawing.
Stability:	Shelf life: one year from despatch.
Predicted Protein Size:	~ 48 kDa
Gene Name:	GATA binding protein 4
Database Link:	Entrez Gene 14463 Mouse Entrez Gene 54254 Rat Entrez Gene 2626 Human P43694



[View online »](#)

Background:

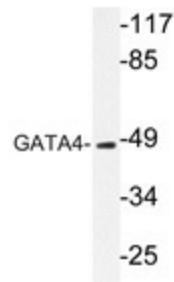
GATA4 is a 46 kDa member of the GATA family of zinc finger containing transcription factors that is involved in the development of cardiac hypertrophy and remodeling, and plays a critical role in regulating basal and agonist or stress induced gene expression in cardiac and smooth muscle cell types. GATA4 contains a conserved MAPK phosphorylation site at serine 105 within the transcriptional activation domain. Serine 105 of GATA4 is phosphorylated in response to agonist stimulation through MEK 1 ERK1 / 2, and weakly through JNK or p38 MAPKs.

Synonyms:

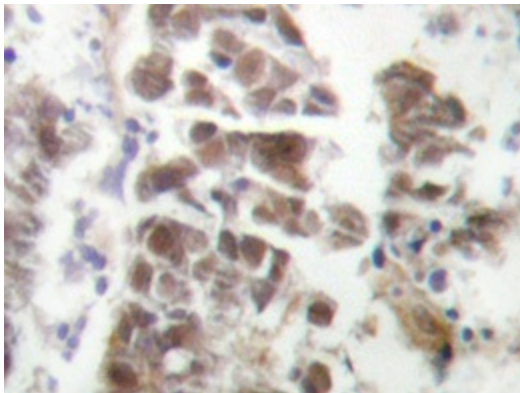
GATA-4, GATA-binding factor 4

Protein Families:

Embryonic stem cells, ES Cell Differentiation/IPS, Induced pluripotent stem cells, Transcription Factors

Product images:

Western blot analysis of GATA4 antibody (Cat.-No.: AP20302PU-N) in extracts from HeLa cells.



Immunohistochemistry analyzes of GATA4 antibody (Cat.-No.: AP20302PU-N) in paraffin-embedded human lung carcinoma tissue.