

Product datasheet for **AP20300PU-N**

Eph receptor B1 (EPHB1) (+EphB2) Rabbit Polyclonal Antibody

Product data:

Product Type:	Primary Antibodies
Applications:	IF, IHC, WB
Recommended Dilution:	Western blot: 1/500-1/1000. Immunohistochemistry on paraffin sections: 1/50-1/200. Immunofluorescence: 1/50-1/200.
Reactivity:	Human, Mouse, Rat
Host:	Rabbit
Clonality:	Polyclonal
Specificity:	This antibody detects endogenous levels of EphB1/2 protein.
Formulation:	Phosphate buffered saline (PBS) with 15 mM sodium azide, approx. pH 7.2 State: Aff - Purified State: Liquid purified Ig fraction
Concentration:	1.0 mg/ml
Purification:	Affinity-chromatography using epitope-specific immunogen; purity is > 95% (by SDS-PAGE)
Conjugation:	Unconjugated
Storage:	Store undiluted at 2-8°C for one month or (in aliquots) at -20°C for longer. Avoid repeated freezing and thawing.
Stability:	Shelf life: one year from despatch.
Predicted Protein Size:	~ 110 kDa
Gene Name:	EPH receptor B1
Database Link:	Entrez Gene 24338 Rat Entrez Gene 270190 Mouse Entrez Gene 2047 Human P54762



[View online »](#)

Background:

Ephrin receptors bind members of the ephrin ligand family. They are divided into 2 groups based on the similarity of their extracellular domain sequences and their affinities for binding ephrin-A and ephrin-B ligands. They make up the largest subgroup of the receptor tyrosine kinase (RTK) family. Eph receptor B1 (EphB1) and Eph receptor B2 (EphB2) are receptors for ephrin-B family members. Developing and adult neural tissue express nearly all of the Ephrin receptors and ephrin ligands. Ephrins and ephrin receptors also play a significant role in angiogenesis. EphB2 acts as a tumor suppressor.

Synonyms:

EPHT2, NET, HEK6, ELK, EPH2, Ephrin type-B receptor 1

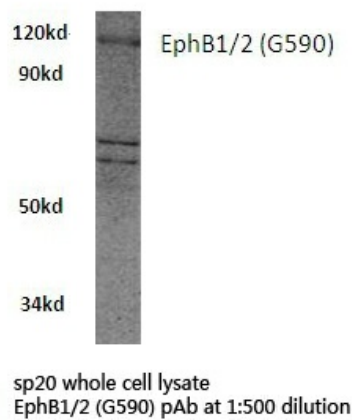
Protein Families:

Druggable Genome, Protein Kinase, Transmembrane

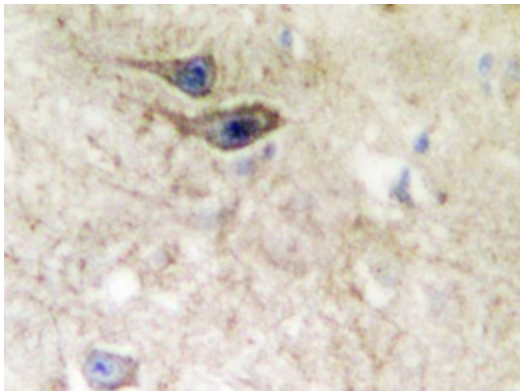
Protein Pathways:

Axon guidance

Product images:



Western blot (WB) analysis of EphB1/2 antibody (Cat.-No.: AP20300PU-N) in extracts from sp20 cells.



Immunohistochemistry analyzes of EphB1/2 antibody (Cat.-No.: AP20300PU-N) in paraffin-embedded human brain tissue.