

## Product datasheet for **AP20300PU-M**

### Eph receptor B1 (EPHB1) (+EphB2) Rabbit Polyclonal Antibody

#### Product data:

Product Type:	Primary Antibodies
Applications:	IF, IHC, WB
Recommended Dilution:	<b>Western blot:</b> 1/500-1/1000. <b>Immunohistochemistry on paraffin sections:</b> 1/50-1/200. <b>Immunofluorescence:</b> 1/50-1/200.
Reactivity:	Human, Mouse, Rat
Host:	Rabbit
Clonality:	Polyclonal
Specificity:	This antibody detects endogenous levels of EphB1/2 protein.
Formulation:	Phosphate buffered saline (PBS) with 15 mM sodium azide, approx. pH 7.2 State: Aff - Purified State: Liquid purified Ig fraction
Concentration:	1.0 mg/ml
Purification:	Affinity-chromatography using epitope-specific immunogen; purity is > 95% (by SDS-PAGE)
Conjugation:	Unconjugated
Storage:	Store undiluted at 2-8°C for one month or (in aliquots) at -20°C for longer. Avoid repeated freezing and thawing.
Stability:	Shelf life: one year from despatch.
Predicted Protein Size:	~ 110 kDa
Gene Name:	EPH receptor B1
Database Link:	<a href="#">Entrez Gene 24338 Rat</a> <a href="#">Entrez Gene 270190 Mouse</a> <a href="#">Entrez Gene 2047 Human</a> <a href="#">P54762</a>



[View online »](#)

**Background:**

Ephrin receptors bind members of the ephrin ligand family. They are divided into 2 groups based on the similarity of their extracellular domain sequences and their affinities for binding ephrin-A and ephrin-B ligands. They make up the largest subgroup of the receptor tyrosine kinase (RTK) family. Eph receptor B1 (EphB1) and Eph receptor B2 (EphB2) are receptors for ephrin-B family members. Developing and adult neural tissue express nearly all of the Ephrin receptors and ephrin ligands. Ephrins and ephrin receptors also play a significant role in angiogenesis. EphB2 acts as a tumor suppressor.

**Synonyms:**

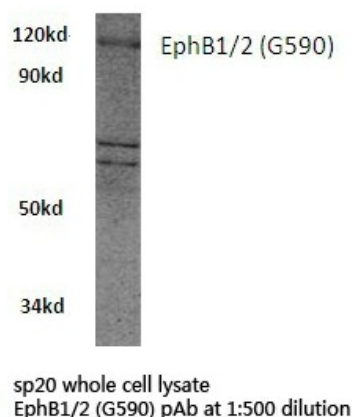
EPHT2, NET, HEK6, ELK, EPH2, Ephrin type-B receptor 1

**Protein Families:**

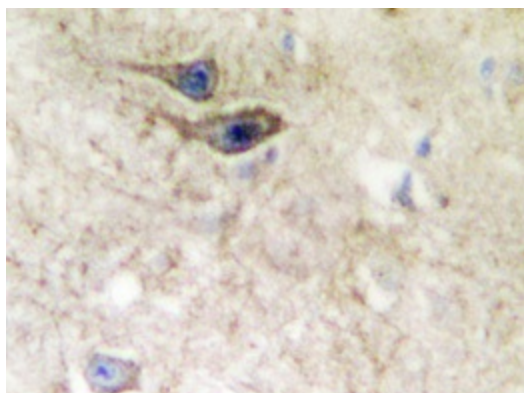
Druggable Genome, Protein Kinase, Transmembrane

**Protein Pathways:**

Axon guidance

**Product images:**


Western blot (WB) analysis of EphB1/2 antibody (Cat.-No.: [AP20300PU-N]) in extracts from sp20 cells.



Immunohistochemistry analyzes of EphB1/2 antibody (Cat.-No.: [AP20300PU-N]) in paraffin-embedded human brain tissue.