

Product datasheet for **AP20298PU-M**

CSK Rabbit Polyclonal Antibody

Product data:

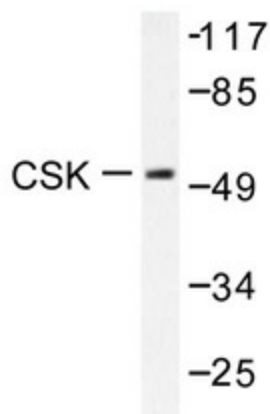
Product Type:	Primary Antibodies
Applications:	IHC, WB
Recommended Dilution:	Western blot: 1/500-1/1000. Immunohistochemistry on paraffin sections 1/50-1/200.
Reactivity:	Human, Mouse, Rat
Host:	Rabbit
Clonality:	Polyclonal
Specificity:	This antibody detects endogenous levels of Csk protein.
Formulation:	Phosphate buffered saline (PBS) with 0.05% sodium azide, approx. pH 7.2 State: Aff - Purified State: Liquid purified Ig fraction
Concentration:	1.0 mg/ml
Purification:	Affinity-chromatography using epitope-specific immunogen; purity is > 95% (by SDS-PAGE)
Conjugation:	Unconjugated
Storage:	Store undiluted at 2-8°C for one month or (in aliquots) at -20°C for longer. Avoid repeated freezing and thawing.
Stability:	Shelf life: one year from despatch.
Predicted Protein Size:	~ 50 kDa
Gene Name:	c-src tyrosine kinase
Database Link:	Entrez Gene 12988 Mouse Entrez Gene 315707 Rat Entrez Gene 1445 Human P41240
Background:	C terminal Src kinase (CSK) is a non receptor protein tyrosine kinase. One of its major functions is to specifically phosphorylate a conserved C terminal tyrosine of Src family kinases thereby down regulating their kinase activity. CSK is expressed ubiquitously as a protein of approximately 50 KDa in cytosol, but a fraction distributes to lipid rafts due to interaction with the lipid raft associated protein PAG (CSK binding protein).
Synonyms:	Tyrosine-protein kinase CSK, C-SRC kinase, Protein-tyrosine kinase CYL
Protein Families:	Druggable Genome, Protein Kinase



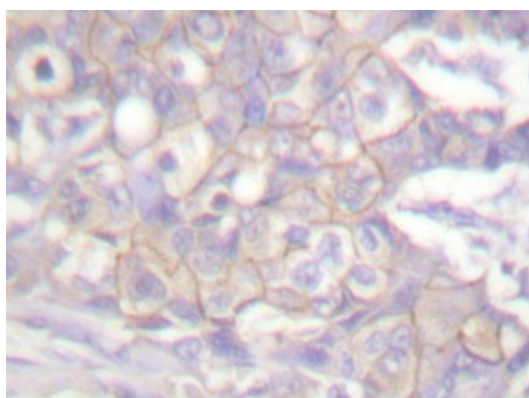
[View online »](#)

Protein Pathways: Chemokine signaling pathway, Epithelial cell signaling in Helicobacter pylori infection, Neurotrophin signaling pathway, Regulation of actin cytoskeleton

Product images:



Western blot analyzes of Csk antibody ([AP20298PU-NJ]) in extracts from Raw264.7 cells.



Immunohistochemistry analyzes of Csk antibody ([AP20298PU-NJ]) in paraffin-embedded human breast carcinoma tissue.