

## Product datasheet for **AP20293PU-N**

### Calcium Sensing Receptor (CASR) Rabbit Polyclonal Antibody

#### Product data:

Product Type:	Primary Antibodies
Applications:	IHC, WB
Recommended Dilution:	<b>Western blot:</b> 1/500-1/1000. <b>Immunohistochemistry on Paraffin Sections:</b> 1/50-1/200.
Reactivity:	Human, Mouse, Rat
Host:	Rabbit
Clonality:	Polyclonal
Specificity:	This antibody detects endogenous levels of CaR protein.
Formulation:	Phosphate Buffered Saline (PBS), pH~7.2 State: Aff - Purified State: Liquid purified Ig fraction (> 95% pure by SDS-PAGE) Preservative: 0.05% Sodium Azide
Concentration:	1.0 mg/ml
Purification:	Affinity Chromatography using epitope-specific immunogen
Conjugation:	Unconjugated
Storage:	Store undiluted at 2-8°C for one month or (in aliquots) at -20°C for longer. Avoid repeated freezing and thawing.
Stability:	Shelf life: one year from despatch.
Predicted Protein Size:	~140 kDa
Gene Name:	calcium sensing receptor
Database Link:	<a href="#">Entrez Gene 12374 Mouse</a> <a href="#">Entrez Gene 24247 Rat</a> <a href="#">Entrez Gene 846 Human P41180</a>



[View online »](#)

**Background:**

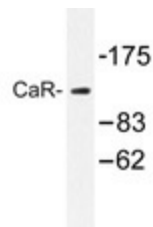
The calcium sensing receptor (CaSR) has been shown to play a major role in regulating parathyroid hormone secretion and subsequently influencing the calcium concentration of extracellular fluids. Based on sequence analysis of cDNA clones it appears that the CaSR is similar to the 7-transmembrane-domain G-protein-coupled receptor superfamily. Changes in extracellular calcium are thought to modulate a balance between proliferation and differentiation in a variety of cell types. In normal primary keratinocytes and breast epithelial cells, proliferation is inhibited and elevated extracellular calcium levels trigger differentiation. Malignant transformations of these cell types are accompanied by a loss of responsiveness to the anti-proliferative effects of elevated extracellular calcium. Several disorders of calcium homeostasis have been linked to mutations in the CaSR. These include familial hypocalciuric hypercalcemia (FHH), neonatal severe hyperparathyroidism (NSHPT), and autosomal dominant hypocalcemia (ADHypo).

**Synonyms:**

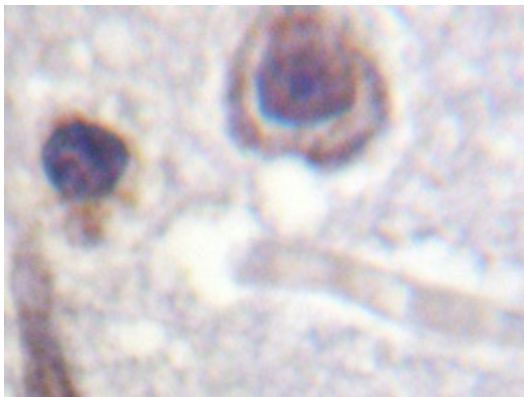
Extracellular calcium-sensing receptor, GPRC2A, PCAR1

**Protein Families:**

Druggable Genome, GPCR, Transmembrane

**Product images:**

Western blot analyzes of CaSR antibody (AP20293PU-N) in extracts from LOVO cells.



Immunohistochemistry analyzes of CaR antibody (AP20293PU-N) in paraffin-embedded human brain tissue.