

## Product datasheet for **AP20291PU-N**

### **RUNX1 Rabbit Polyclonal Antibody**

#### **Product data:**

Product Type:	Primary Antibodies
Applications:	IHC, WB
Recommended Dilution:	<b>Western blot:</b> 1/500-1/1000. <b>Immunohistochemistry on paraffin sections</b> 1/50-1/200.
Reactivity:	Human, Mouse, Rat
Host:	Rabbit
Clonality:	Polyclonal
Specificity:	This antibody detects endogenous levels of AML1 protein.
Formulation:	Phosphate buffered saline (PBS) with 0.05% sodium azide, approx. pH 7.2 State: Aff - Purified State: Liquid purified Ig fraction
Concentration:	1.0 mg/ml
Purification:	Affinity-chromatography using epitope-specific immunogen; purity is > 95% (by SDS-PAGE)
Conjugation:	Unconjugated
Storage:	Store undiluted at 2-8°C for one month or (in aliquots) at -20°C for longer. Avoid repeated freezing and thawing.
Stability:	Shelf life: one year from despatch.
Predicted Protein Size:	~ 55 kDa
Gene Name:	runt related transcription factor 1
Database Link:	<a href="#">Entrez Gene 12394 Mouse</a> <a href="#">Entrez Gene 50662 Rat</a> <a href="#">Entrez Gene 861 Human</a> <a href="#">Q01196</a>



[View online »](#)

**Background:**

AML1/Runx1 binds DNA as a monomer and through the Runt domain. DNA binding is increased by heterodimerization with CBFβ. Isoform AML1L can neither bind DNA nor heterodimerize and interferes with the transactivation activity of AML1/Runx1. CBF binds to the core site, 5'-PYGPGGT-3', of a number of enhancers and promoters, including murine leukemia virus, polyomavirus enhancer, T cell receptor enhancers, LCK, IL3 and GM-CSF promoters. The alpha subunit binds DNA and appears to have a role in the development of normal hematopoiesis. AML1/Runx1 is expressed in all tissues examined except brain and heart, and is expressed at the highest levels in thymus, bone marrow and peripheral blood. Defects in AML1/Runx1 are the cause of familial platelet disorder with associated myeloid malignancy, an autosomal dominant disease characterized by qualitative and quantitative platelet defects, and propensity to develop acute myelogenous leukemia.

**Synonyms:**

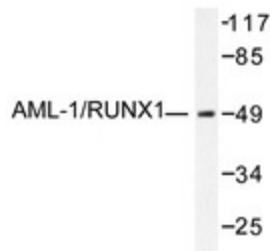
Runt-related transcription factor, 1, AML1, AML-1, AMLCR1, Acute myeloid leukemia 1 protein, AML1-EVI-1, EVI-1, CBFA2, CBF-α-2, PEA2-α B, PEBP2-α B, PEBP2A2

**Protein Families:**

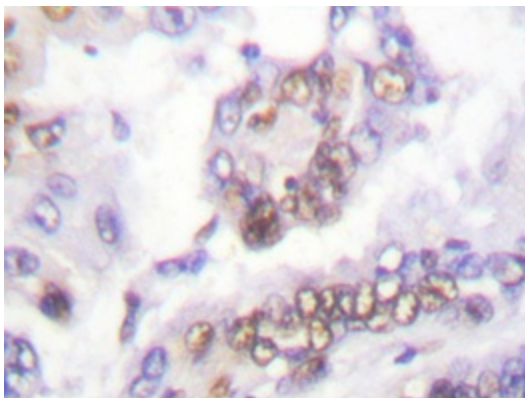
Druggable Genome, ES Cell Differentiation/IPS, Transcription Factors

**Protein Pathways:**

Acute myeloid leukemia, Chronic myeloid leukemia, Pathways in cancer

**Product images:**


Western blot analysis of AML1 antibody (AP20291PU-N) in extracts from Jurkat cells.



Immunohistochemistry analysis of AML1 antibody (AP20291PU-N) in paraffin-embedded human lung carcinoma tissue.