

## Product datasheet for **AP20283PU-N**

### Separase (ESPL1) Rabbit Polyclonal Antibody

#### Product data:

Product Type:	Primary Antibodies
Applications:	IF, IHC, WB
Recommended Dilution:	<b>Western blot:</b> 1/500-1/1000. <b>Immunohistochemistry on paraffin sections:</b> 1/50-1/200. <b>Immunofluorescence:</b> 1/50-1/200.
Reactivity:	Human, Mouse
Host:	Rabbit
Clonality:	Polyclonal
Specificity:	This antibody detects endogenous levels of Separase protein.
Formulation:	Phosphate buffered saline (PBS) with 0.05% sodium azide, approx. pH 7.2 State: Aff - Purified State: Liquid purified Ig fraction
Concentration:	1.0 mg/ml
Purification:	Affinity-chromatography using epitope-specific immunogen; purity is > 95% (by SDS-PAGE)
Conjugation:	Unconjugated
Storage:	Store undiluted at 2-8°C for one month or (in aliquots) at -20°C for longer. Avoid repeated freezing and thawing.
Stability:	Shelf life: one year from despatch.
Predicted Protein Size:	~ 230 kDa
Gene Name:	extra spindle pole bodies like 1, separase
Database Link:	<a href="#">Entrez Gene 105988 Mouse</a> <a href="#">Entrez Gene 9700 Human</a> <a href="#">Q14674</a>



[View online »](#)

**Background:**

Separase is a cysteine protease that triggers anaphase in all eukaryotes by participating in separation of sister chromatids during mitosis. Once activated, separase hydrolyzes the SCC1 subunit of cohesin, the chromosomal protein complex responsible for sister chromatid cohesion. Separase and cohesin are highly conserved from yeasts to humans. When the cell is not dividing, separase is prevented from cleaving cohesin through its association with another protein, securin. When anaphase is signaled, the securin is ubiquitinated and hydrolyzed by APC/cyclosome, releasing the active separase. Separase is transiently activated between the two meioses and may also be involved in homolog separation.

**Synonyms:**

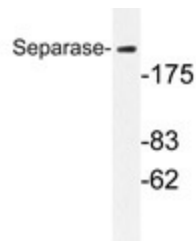
Separase, ESP1, KIAA0165

**Protein Families:**

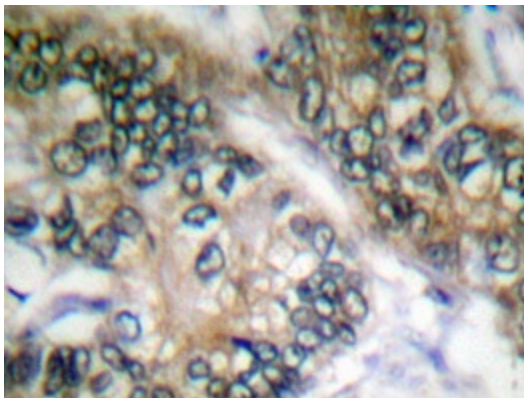
Druggable Genome, Protease

**Protein Pathways:**

Cell cycle, Oocyte meiosis

**Product images:**


Western blot analysis of Separase antibody (9AP20283PU-N) in extracts from 293 cells.



Immunohistochemistry analyzes of Separase antibody (AP20283PU-N) in paraffin-embedded human colon carcinoma tissue.