

Product datasheet for **AP20280PU-M**

KSR1 Rabbit Polyclonal Antibody

Product data:

Product Type:	Primary Antibodies
Applications:	IF, IHC, WB
Recommended Dilution:	Western blot: 1/500-1/1000. Immunofluorescence: 1/50-1/200. Immunohistochemistry on Paraffin Sections: 1/50-1/200.
Reactivity:	Human, Mouse
Host:	Rabbit
Clonality:	Polyclonal
Immunogen:	Synthetic peptide, corresponding to amino acids 350-402 of Human KSR.
Specificity:	This antibody detects endogenous levels of KSR protein.
Formulation:	PBS, pH~7.2 State: Aff - Purified State: Liquid purified Ig fraction (> 95% by SDS-PAGE) Preservative: 0.05% Sodium Azide
Concentration:	1.0 mg/ml
Purification:	Affinity Chromatography using epitope-specific immunogen
Conjugation:	Unconjugated
Storage:	Store undiluted at 2-8°C for one month or (in aliquots) at -20°C for longer. Avoid repeated freezing and thawing.
Stability:	Shelf life: one year from despatch.
Predicted Protein Size:	~ 115 kDa
Gene Name:	kinase suppressor of ras 1
Database Link:	Entrez Gene 16706 Mouse Entrez Gene 8844 Human Q8IVT5



[View online »](#)

Background:

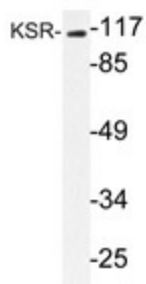
Several serine/threonine protein kinases have been implicated as intermediates in signal transduction pathways. These include ERK/MAP kinases, ribosomal S6 kinase (Rsk) and Raf-1. Raf-1 has intrinsic kinase activity towards serine/threonine residues and is widely expressed in many tissue types and cell lines. Raf-1 activation is dependent on the small molecular weight GTPase Ras, but the means by which this activation occurs is poorly understood. Two proteins putatively involved in this process are Ksr-1 and Tak1. Ksr-1 (kinase suppressor of Ras) is a novel Raf-related protein kinase whose function is required for Ras signal transduction. Whether Ksr-1 lies directly downstream of Ras or acts in a parallel pathway is not yet known. Tak1 (TGF β -activated kinase) has been shown to participate in the activation of the MAP kinase family in response to TGF β stimulation.

Synonyms:

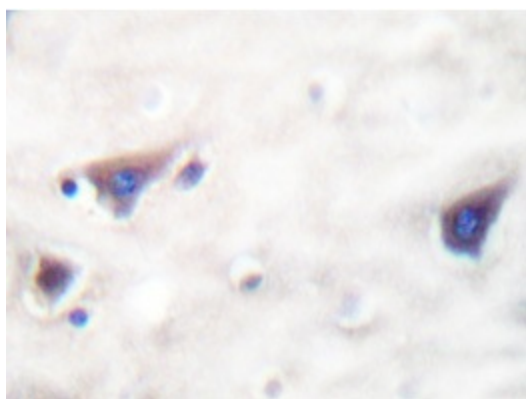
KSR1, KSR-1, KSR

Protein Families:

Druggable Genome, Protein Kinase

Product images:


Western blot analysis of KSR antibody in extracts from NIH/3T3 cells.



Immunohistochemistry analyzes of KSR antibody in paraffin-embedded human brain tissue.