

Product datasheet for **AP20279PU-M**

CRKL Rabbit Polyclonal Antibody

Product data:

Product Type:	Primary Antibodies
Applications:	IF, IHC, WB
Recommended Dilution:	Western blot: 1/500-1/1000. Immunofluorescence: 1/50-1/200. Immunohistochemistry on Paraffin Sections: 1/50-1/200.
Reactivity:	Human, Mouse, Rat
Host:	Rabbit
Clonality:	Polyclonal
Specificity:	This antibody detects endogenous levels of CrkL protein.
Formulation:	Phosphate buffered saline (PBS), pH~7.2 with 0.05% Sodium Azide as preservative State: Aff - Purified State: Liquid purified Ig fraction (> 95% pure by SDS-PAGE)
Concentration:	1.0 mg/ml
Purification:	Affinity Chromatography using epitope-specific immunogen
Conjugation:	Unconjugated
Storage:	Store the antibody undiluted at 2-8° for one month or (in aliquots) at -20°C for longer. Avoid repeated freezing and thawing.
Stability:	Shelf life: one year from despatch.
Predicted Protein Size:	~ 39 kDa
Gene Name:	v-crk avian sarcoma virus CT10 oncogene homolog-like
Database Link:	Entrez Gene 12929 Mouse Entrez Gene 287942 Rat Entrez Gene 1399 Human P46109



[View online »](#)

Background:

SH2 and SH3 (Src homology) domains were originally identified as critical functional domains within non-receptor proteins with tyrosine kinase activity. A subset of these proteins appears to exist predominately of SH2/SH3 domains in the absence of detectable catalytic domains. One of the first members of the family to be identified, Crk, is a transformation-specific protein that induces elevation of cellular phosphotyrosine levels, but lacks tyrosine kinase activity itself. A second protein, Nck, consists solely of three SH3 domains and one SH2 domain, while GRB2 contains an SH2 domain flanked on both sides by SH3 domains. A member of this protein class, Crk-L, is encoded by a gene located on chromosome 22, band 11, centromeric of the chronic myelogenous leukemia breakpoint region. Crk-L encodes a 303 amino acid protein with one SH2 and two SH3 domains, and a predicted molecular weight of 36 kDa.

Synonyms:

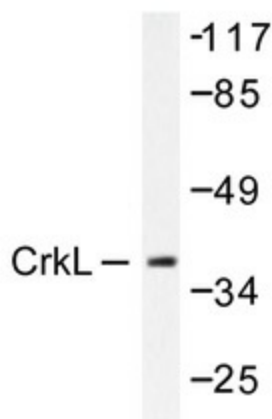
Crk-like protein

Protein Families:

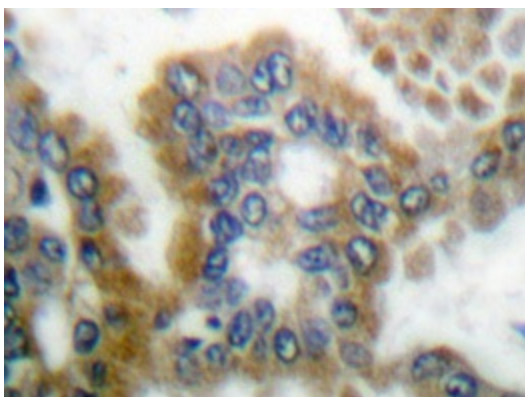
Druggable Genome

Protein Pathways:

Chemokine signaling pathway, Chronic myeloid leukemia, ErbB signaling pathway, Fc gamma R-mediated phagocytosis, Focal adhesion, Insulin signaling pathway, MAPK signaling pathway, Neurotrophin signaling pathway, Pathways in cancer, Regulation of actin cytoskeleton, Renal cell carcinoma

Product images:


Western blot analysis of CrkL antibody ([AP20279PU-NJ]) in extracts from COS7 cells.



Immunohistochemistry analyzes of CrkL antibody ([AP20279PU-N]) in paraffin-embedded human lung carcinoma tissue.