

Product datasheet for **AP20273PU-M**

TGF beta Receptor II (TGFB2) Rabbit Polyclonal Antibody

Product data:

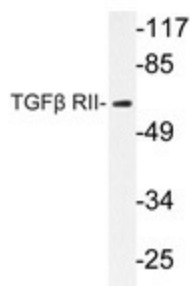
Product Type:	Primary Antibodies
Applications:	IHC, WB
Recommended Dilution:	Western blot: 1/500-1/1000. Immunohistochemistry on Paraffin Sections: 1/50-1/200.
Reactivity:	Human, Mouse
Host:	Rabbit
Clonality:	Polyclonal
Specificity:	This antibody detects endogenous levels of TGF β RII protein.
Formulation:	Phosphate buffered saline (PBS), pH~7.2 State: Aff - Purified State: Liquid purified Ig fraction (> 95% by SDS-PAGE) Preservative: 0.05% Sodium Azide
Concentration:	1.0 mg/ml
Purification:	Affinity Chromatography using epitope-specific immunogen
Conjugation:	Unconjugated
Storage:	Store undiluted at 2-8°C for one month or (in aliquots) at -20°C for longer. Avoid repeated freezing and thawing.
Stability:	Shelf life: one year from despatch.
Predicted Protein Size:	~65.0 kDa
Gene Name:	transforming growth factor beta receptor 2
Database Link:	Entrez Gene 21813 Mouse Entrez Gene 7048 Human P37173



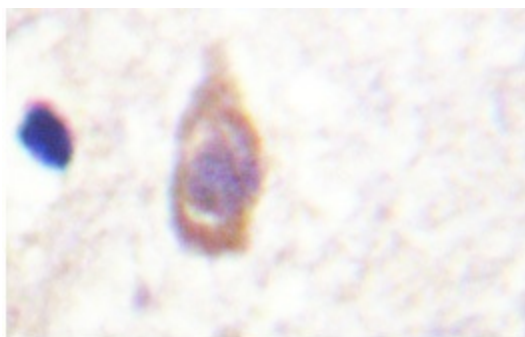
[View online »](#)

Background:	A total of three members of the TGF β family, TGF β 1, TGF β 2 and TGF β 3, have been identified in mammals. Each is synthesized as a latent precursor that is subsequently cleaved forming the 112 amino acid growth factor which becomes active upon dimerization. TGF β s mediate their activity by high affinity binding to the type II receptor (TGF β RII) transmembrane protein with a cytoplasmic serine-threonine kinase domain. For signaling growth inhibition and early gene responses the type II receptor requires both its kinase activity and association with a TGF β -binding protein, designated the type I receptor. Two independent groups have recently described the cloning and sequence analysis of genes encoding TGF β type I receptor proteins designated ALK-5 (T β R-1) and TSR-1, respectively.
Synonyms:	TGF-beta receptor type-2, TGF-beta receptor type II, TGF-beta type II receptor, TbetaR-II, TGFR-2
Protein Families:	Druggable Genome, Protein Kinase, Transmembrane
Protein Pathways:	Adherens junction, Chronic myeloid leukemia, Colorectal cancer, Cytokine-cytokine receptor interaction, Endocytosis, MAPK signaling pathway, Pancreatic cancer, Pathways in cancer, TGF-beta signaling pathway

Product images:



Western blot analysis of [AP20273PU-N] TGFB2 antibody in extracts from NIH/3T3 cells.



Immunohistochemistry analyzes of [AP20273PU-N] TGFB2 antibody in paraffin-embedded Human brain tissue.