

## Product datasheet for **AP20270PU-M**

### MEK4 (MAP2K4) Rabbit Polyclonal Antibody

#### Product data:

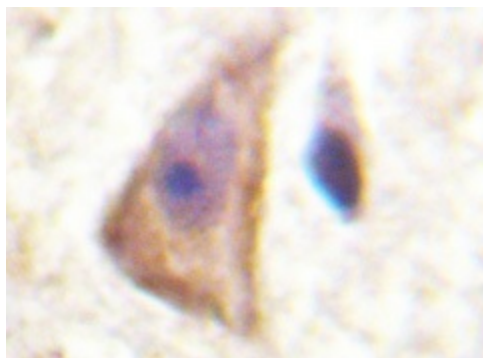
Product Type:	Primary Antibodies
Applications:	IF, IHC
Recommended Dilution:	<b>Immunohistochemistry on paraffin sections:</b> 1/50-1/200. <b>Immunofluorescence:</b> 1/50-1/200.
Reactivity:	Human, Mouse, Rat
Host:	Rabbit
Clonality:	Polyclonal
Specificity:	This antibody detects endogenous levels of MEK-4 protein. (region surrounding Gln253)
Formulation:	Phosphate buffered saline (PBS), pH 7.2 State: Aff - Purified State: Liquid purified Ig fraction Preservative: 0.05% sodium azide
Concentration:	1.0 mg/ml
Purification:	Affinity-chromatography using epitope-specific immunogen; purity is > 95% (by SDS-PAGE)
Conjugation:	Unconjugated
Storage:	Store undiluted at 2-8°C for one month or (in aliquots) at -20°C for longer. Avoid repeated freezing and thawing.
Stability:	Shelf life: one year from despatch.
Predicted Protein Size:	~ 44 kDa
Gene Name:	mitogen-activated protein kinase kinase 4
Database Link:	<u><a href="#">Entrez Gene 26398 Mouse</a></u> <u><a href="#">Entrez Gene 287398 Rat</a></u> <u><a href="#">Entrez Gene 6416 Human</a></u> <u><a href="#">P45985</a></u>



[View online »](#)

<b>Background:</b>	The prototype member of this family, designated MAP kinase kinase, or MEK-1, specifically phosphorylates the MAP kinase regulatory threonine and tyrosine residues present in the Thr-Glu-Tyr motif of ERK. A second MEK family member, MEK-2, resembles MEK-1 in its substrate specificity. MEK-3 (or MKK-3) functions to activate p38 MAP kinase, and MEK-4 (also called SEK1 or MKK-4) activates both p38 and JNK MAP kinases. MEK-5 appears to specifically phosphorylate ERK 5, whereas MEK-6 phosphorylates p38 and p38 $\beta$ . MEK-7 (or MKK-7) phosphorylates and activates the JNK signal transduction pathway.
<b>Synonyms:</b>	JNK-activating kinase 1, MAP Kinase Kinase 4, SAPK/ERK kinase 1, PRKMK4, SERK1, MEK-4, MAPKK4, MKK4
<b>Protein Families:</b>	Druggable Genome, Protein Kinase
<b>Protein Pathways:</b>	Epithelial cell signaling in Helicobacter pylori infection, ErbB signaling pathway, Fc epsilon RI signaling pathway, GnRH signaling pathway, MAPK signaling pathway, Toll-like receptor signaling pathway

### Product images:



Immunohistochemistry (IHC) analyzes of MEK-4 antibody (Cat.-No.: [AP20270PU-N]) in paraffin-embedded human brain tissue.