

Product datasheet for **AP20266PU-M**

PMP22 Rabbit Polyclonal Antibody

Product data:

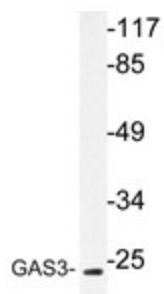
Product Type:	Primary Antibodies
Applications:	IHC, WB
Recommended Dilution:	Western blot: 1/500-1/1000. immunohistochemistry on paraffin sections: 1/50-1/200.
Reactivity:	Human, Mouse, Rat
Host:	Rabbit
Clonality:	Polyclonal
Specificity:	This detects endogenous levels of GAS3 protein.
Formulation:	Phosphate buffered saline (PBS) with 0.05% sodium azide, approx. pH 7.2 State: Aff - Purified State: Liquid purified Ig fraction
Concentration:	1.0 mg/ml
Purification:	Affinity-chromatography using epitope-specific immunogen; purity is > 95% (by SDS-PAGE)
Conjugation:	Unconjugated
Storage:	Store undiluted at 2-8°C for one month or (in aliquots) at -20°C for longer. Avoid repeated freezing and thawing.
Stability:	Shelf life: one year from despatch.
Predicted Protein Size:	~ 22 kDa
Gene Name:	peripheral myelin protein 22
Database Link:	Entrez Gene 24660 Rat Entrez Gene 5376 Human Q01453
Background:	PMP 22 is a 22 kDa glycoprotein expressed in the compact myelin of the peripheral nervous system. In the peripheral nervous system, PMP 22 is produced by myelinating Schwann cells and is coexpressed with the genes for myelin basic protein (MBP) during nerve development and regeneration. Alterations in the level of this protein cause several genetic human diseases. If the protein is duplicated, patients develop Charcot Marie Tooth disease. If one copy of the gene is deleted, they suffer from the inherited tendency to pressure palsies.
Synonyms:	PMP-22, GAS3, GAS-3, Peripheral myelin protein 22



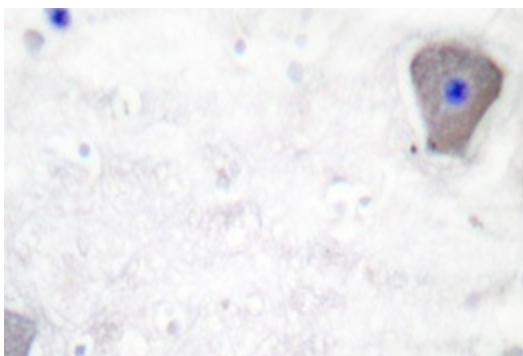
[View online »](#)

Protein Families: Transmembrane

Product images:



Western blot analysis of GAS3 antibody ([AP20266PU-N]) in extracts from MDA-MB-435 cells.



Immunohistochemistry analyzes of GAS3 antibody ([AP20266PU-N]) in paraffin-embedded human brain tissue.