

Product datasheet for **AP20260PU-M**

BCAR1 Rabbit Polyclonal Antibody

Product data:

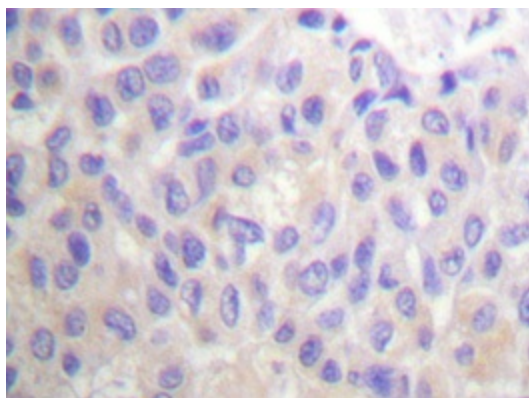
Product Type:	Primary Antibodies
Applications:	IHC
Recommended Dilution:	Immunohistochemistry on paraffin sections: 1/50-1/200.
Reactivity:	Human, Mouse, Rat
Host:	Rabbit
Clonality:	Polyclonal
Specificity:	This antibody detects endogenous levels of p130 Cas protein.
Formulation:	Phosphate buffered saline (PBS) with 0.05% sodium azide, approx. pH 7.2 State: Aff - Purified State: Liquid purified Ig fraction
Concentration:	1.0 mg/ml
Purification:	Affinity-chromatography using epitope-specific immunogen; purity is > 95% (by SDS-PAGE)
Conjugation:	Unconjugated
Storage:	Store undiluted at 2-8°C for one month or (in aliquots) at -20°C for longer. Avoid repeated freezing and thawing.
Stability:	Shelf life: one year from despatch.
Predicted Protein Size:	~ 130 kDa
Gene Name:	BCAR1, Cas family scaffolding protein
Database Link:	Entrez Gene 12927 Mouse Entrez Gene 25414 Rat Entrez Gene 9564 Human P56945



[View online »](#)

Background:	Two retinoblastoma related proteins, p107 and pRb2 / p130, which are structurally and functionally similar to the product of the retinoblastoma gene (pRb / p105), were cloned by taking advantage of their ability to bind transforming proteins of DNA tumor viruses through a particular region called the pocket domain. Like pRb, both proteins play a fundamental role in growth control. These Rb family proteins were measured in a variety of lung neoplasms. The highest percentage of undetectable levels and the tightest inverse correlation with the histological grading and with PCNA expression in the most aggressive tumor types were found for pRb2 / p130, which may suggest an important role for this protein in the pathogenesis and progression of lung cancer.
Synonyms:	p130cas, CASS1
Protein Families:	Druggable Genome
Protein Pathways:	Chemokine signaling pathway, Focal adhesion, Leukocyte transendothelial migration, Regulation of actin cytoskeleton

Product images:



Immunohistochemistry analyzes of p130 Cas antibody ([AP20260PU-N]) in paraffin-embedded human breast carcinoma tissue.