

## Product datasheet for **AP20258PU-S**

### Moesin (MSN) Rabbit Polyclonal Antibody

#### Product data:

Product Type:	Primary Antibodies
Applications:	IHC, WB
Recommended Dilution:	<b>Western blot:</b> 1/500-1/1000. <b>Immunohistochemistry on paraffin sections:</b> 1/50-1/200.
Reactivity:	Human, Mouse, Rat
Host:	Rabbit
Clonality:	Polyclonal
Specificity:	This antibody detects endogenous levels of Moesin protein.
Formulation:	Phosphate buffered saline (PBS) with 15 mM sodium azide, approx. pH 7.2 State: Aff - Purified State: Liquid purified Ig fraction
Concentration:	1.0 mg/ml
Purification:	Affinity-chromatography using epitope-specific immunogen; purity is > 95% (by SDS-PAGE)
Conjugation:	Unconjugated
Storage:	Store undiluted at 2-8°C for one month or (in aliquots) at -20°C for longer. Avoid repeated freezing and thawing.
Stability:	Shelf life: one year from despatch.
Predicted Protein Size:	~ 78 kDa
Gene Name:	moesin
Database Link:	<a href="#">Entrez Gene 17698 Mouse</a> <a href="#">Entrez Gene 81521 Rat</a> <a href="#">Entrez Gene 4478 Human P26038</a>



[View online »](#)

**Background:**

Moesin is a member of the ERM (Ezrin-Radixin-Moesin) protein family, which possesses structural and probably functional relationships; they function as plasma membrane-actin cytoskeleton linkers and participate in the formation of specialized domains of the plasma membrane and are all localized to the submembranous cytoskeleton. Moesin is widely expressed in different tissues in cells, where it is localized to filopodia and other membranous protrusions that are important for cell-cell recognition and signalling and for cell movement. The antibody has been used to inhibit both the binding of proteoheparan sulfate to smooth muscle cells, and the infectivity of measles virus.

**Synonyms:**

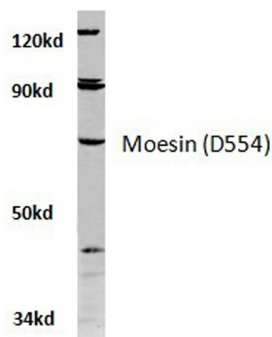
MSN

**Protein Families:**

Druggable Genome

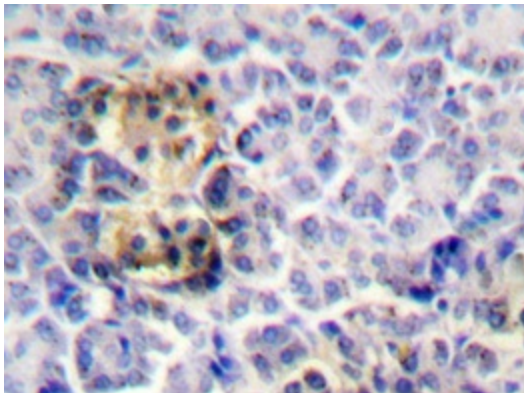
**Protein Pathways:**

Leukocyte transendothelial migration, Regulation of actin cytoskeleton

**Product images:**


A549 whole cell lysate  
Moesin (D554) pAb at 1:500 dilution

Western blot (WB) analysis of Moesin antibody (Cat.-No.: [AP20258PU-N]) in extracts from A549 cells.



Immunohistochemistry analyzes of Moesin antibody ([AP20258PU-N]) in paraffin-embedded human pancreas tissue.