

Product datasheet for **AP20253PU-M**

Eg5 (KIF11) Rabbit Polyclonal Antibody

Product data:

Product Type:	Primary Antibodies
Applications:	IF, IHC, WB
Recommended Dilution:	Western blot: 1/500-1/1000. Immunohistochemistry on paraffin sections: 1/50-1/200. Immunofluorescence: 1/50-1/200.
Reactivity:	Human
Host:	Rabbit
Clonality:	Polyclonal
Specificity:	This antibody detects endogenous levels of Eg5 protein.
Formulation:	Phosphate buffered saline (PBS) with 0.05% sodium azide, approx. pH 7.2 State: Aff - Purified State: Liquid purified Ig fraction
Concentration:	1.0 mg/ml
Purification:	Affinity-chromatography using epitope-specific immunogen; purity is > 95% (by SDS-PAGE)
Conjugation:	Unconjugated
Storage:	Store undiluted at 2-8°C for one month or (in aliquots) at -20°C for longer. Avoid repeated freezing and thawing.
Stability:	Shelf life: one year from despatch.
Predicted Protein Size:	~ 119 kDa
Gene Name:	kinesin family member 11
Database Link:	Entrez Gene 3832 Human P52732

[View online »](#)

Background:

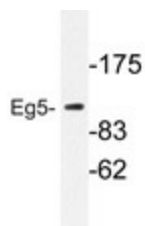
Eukaryotes contain a superfamily of microtubule-based motor proteins comprising Kinesin and a number of related proteins that are thought to participate in various forms of intracellular motility, including cell division and organelle transport. Eg5 (also known as Kinesin-like protein KIF11 or TRIP5) is a slow, plus-end-directed microtubule-based motor of the BimC kinesin family that is essential for bipolar spindle formation during eukaryotic cell division. When the expression of Eg5 is blocked, centrosome migration halts and cells are arrested in mitosis with monoastal microtubule arrays. Eg5 is phosphorylated on serine during S phase and on both serine and Thr 927 during mitosis, which regulates the association of Eg5 with the spindle apparatus (probably during early prophase). Eg5 is also known to be a member of the thyroid receptor interacting protein (TRIP) family, and interacts with the thyroid hormone receptor only in the presence of thyroid hormone.

Synonyms:

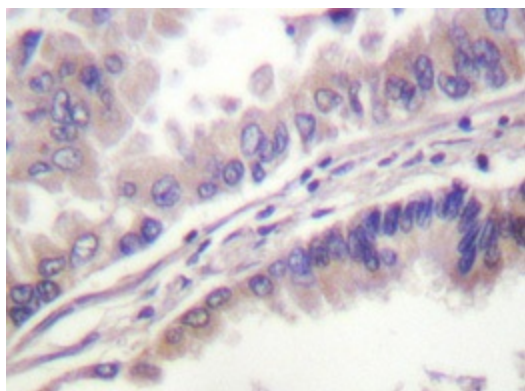
KIF11, EG5, KNSL1, TRIP5, Kinesin-like protein KIF11, Kinesin-related motor protein Eg5, Kinesin-like spindle protein HKSP, Thyroid receptor-interacting protein 5, TRIP-5, Kinesin-like protein 1

Protein Families:

Druggable Genome

Product images:


Western blot analysis of Eg5 antibody ([AP20253PU-N]) in extracts from COLO205 cells.



Immunohistochemistry analyzes of Eg5 antibody ([AP20253PU-N]) in paraffin-embedded human lung carcinoma tissue.