

## Product datasheet for **AP20250PU-N**

### IL9R Rabbit Polyclonal Antibody

#### Product data:

Product Type:	Primary Antibodies
Applications:	IHC
Recommended Dilution:	<b>Immunohistochemistry on paraffin sections:</b> 1/50 - 1/200.
Reactivity:	Human
Host:	Rabbit
Clonality:	Polyclonal
Specificity:	This antibody detects endogenous levels of IL-9R protein.
Formulation:	Phosphate buffered saline (PBS) with 0.05% sodium azide, approx. pH 7.2 State: Aff - Purified State: Liquid purified Ig fraction
Concentration:	1.0 mg/ml
Purification:	Affinity-chromatography using epitope-specific immunogen; purity is > 95% (by SDS-PAGE)
Conjugation:	Unconjugated
Storage:	Store undiluted at 2-8 °C for one month or (in aliquots) at -20 °C for longer. Avoid repeated freezing and thawing.
Stability:	Shelf life: one year from despatch.
Gene Name:	interleukin 9 receptor
Database Link:	<a href="#">Entrez Gene 3581 Human Q01113</a>
Background:	Human Interleukin 9 (IL9) was first identified based on its proliferative activity on a human myeloid leukemic cell line. Human IL9 stimulates the proliferation of the human megakaryocytic leukemic cell line M07e. Human IL9 supports erythroid colony formation and synergizes with IL4 in the production of IgE and IgG. The interleukin 9 receptor is a member of the hematopoietin receptor superfamily. The cDNAs encoding mouse and human IL9 receptors have been isolated. The deduced mouse and human transmembrane proteins, sharing 53% amino acid sequence identity, contain 468 and 533 amino acid residues, respectively. A number of isoforms of IL9R, including a putative soluble form, have also been identified. The IL9 receptor is expressed in a variety of hematopoietic cells including T cells, neutrophils, mast cells, and macrophages.



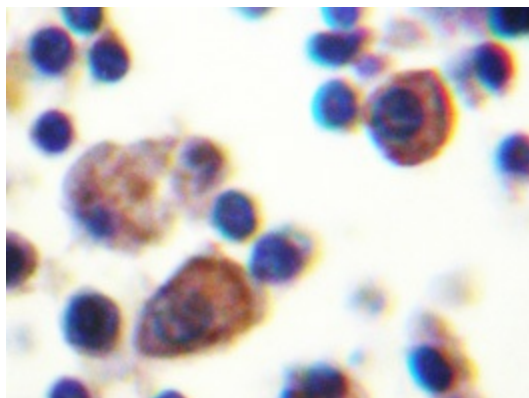
[View online »](#)

**Synonyms:** Interleukin-9 receptor, IL-9R, IL-9 receptor

**Protein Families:** Druggable Genome, Secreted Protein, Transmembrane

**Protein Pathways:** Cytokine-cytokine receptor interaction, Hematopoietic cell lineage, Jak-STAT signaling pathway

**Product images:**



Immunohistochemistry analyzes of IL-9R antibody (AP20250PU-N) in paraffin-embedded human lymph node tissue.