

Product datasheet for **AP20248PU-M**

IFNGR1 Rabbit Polyclonal Antibody

Product data:

Product Type:	Primary Antibodies
Applications:	IF, IHC, WB
Recommended Dilution:	Western blot: 1/500-1/1000. Immunofluorescence: 1/50-1/200. Immunohistochemistry on Paraffin Sections: 1/50-1/200.
Reactivity:	Human, Mouse, Rat
Host:	Rabbit
Clonality:	Polyclonal
Immunogen:	Synthetic peptide, corresponding to amino acids 430-480 of Human IFN-γRα
Specificity:	This antibody detects endogenous levels of IFN-γRα protein.
Formulation:	PBS, pH~7.2 State: Aff - Purified State: Liquid purified Ig fraction (> 95% pure by SDS-PAGE) Preservative: 0.05% Sodium Azide
Concentration:	1.0 mg/ml
Purification:	Affinity Chromatography using epitope-specific immunogen
Conjugation:	Unconjugated
Storage:	Store undiluted at 2-8°C for one month or (in aliquots) at -20°C for longer. Avoid repeated freezing and thawing.
Stability:	Shelf life: One year from despatch.
Gene Name:	interferon gamma receptor 1
Database Link:	<u>Entrez Gene 15979 Mouse</u> <u>Entrez Gene 3459 Human</u> <u>P15260</u>



[View online »](#)

Background:

IFN gamma receptor beta is part of the receptor for interferon gamma. This class II cytokine receptor pairs with CDw119 to form the IFN gamma receptor and is an integral part of the IFN gamma signal transduction pathway. CDw119 serves as the IFN gamma binding chain and associates with the IFN gamma beta chain which is required for receptor signaling. The extracellular portion of both the IFN gamma receptor alpha and beta chains must be species matched. The IFN gamma receptor beta chain is expressed on T and B cells, NK cells, monocytes/ macrophages, and fibroblasts. Binding of IFN gamma induces receptor dimerization, internalization, Jak1 and Jak2 protein kinase activation and, ultimately, STAT1 activation. It is also likely to interact with GAF. IFN gamma initiates and regulates a variety of immune responses and is required for signal transduction. Contains 2 fibronectin type III domains. Defects in IFN gamma Receptor beta are a cause of mendelian susceptibility to mycobacterial disease (MSMD), a rare condition that confers predisposition to illness caused by several mycobacteria strains.

Synonyms:

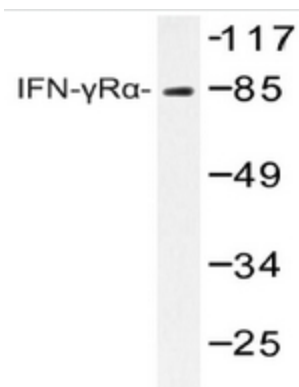
Interferon-gamma receptor alpha chain, IFN-gamma-R1

Protein Families:

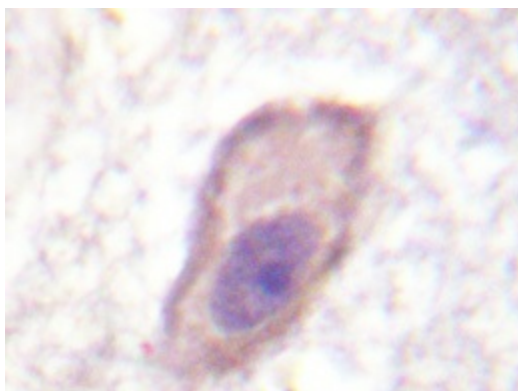
Druggable Genome, ES Cell Differentiation/IPS, Transmembrane

Protein Pathways:

Cytokine-cytokine receptor interaction, Jak-STAT signaling pathway, Natural killer cell mediated cytotoxicity

Product images:


Western blot analyzes of IFNGRA antibody in extracts from COS7 cells.



Immunohistochemistry analyzes of IFNGRA antibody in paraffin-embedded human brain tissue.