

## Product datasheet for **AP20238PU-N**

### **H10 (H1F0) Rabbit Polyclonal Antibody**

#### **Product data:**

Product Type:	Primary Antibodies
Applications:	IF, IHC, WB
Recommended Dilution:	<b>Western blot:</b> 1/500-1/1000. <b>Immunohistochemistry on paraffin sections:</b> 1/50-1/200. <b>Immunofluorescence:</b> 1/50-1/200.
Reactivity:	Human
Host:	Rabbit
Clonality:	Polyclonal
Specificity:	This antibody detects endogenous levels of Histone H1 protein.
Formulation:	Phosphate buffered saline (PBS) with 0.05% sodium azide, approx. pH 7.2 State: Aff - Purified State: Liquid purified Ig fraction
Concentration:	1.0 mg/ml
Purification:	Affinity-chromatography using epitope-specific immunogen; purity is > 95% (by SDS-PAGE)
Conjugation:	Unconjugated
Storage:	Store undiluted at 2-8°C for one month or (in aliquots) at -20°C for longer. Avoid repeated freezing and thawing.
Stability:	Shelf life: one year from despatch.
Predicted Protein Size:	~ 35 kDa
Gene Name:	H1 histone family member 0
Database Link:	<a href="#">Entrez Gene 3005 Human P07305</a>



[View online »](#)

**Background:**

Histones are basic nuclear proteins that are responsible for the nucleosome structure of the chromosomal fiber in eukaryotes. Two molecules of each of the four core histones (H2A, H2B, H3, and H4) form an octamer, around which approximately 146 bp of DNA is wrapped in repeating units, called nucleosomes. The linker histone, H1, interacts with linker DNA between nucleosomes and functions in the compaction of chromatin into higher order structures. This gene is intronless and encodes a member of the histone H1 family. Transcripts from this gene lack polyA tails but instead contain a palindromic termination element. This gene is found in the large histone gene cluster on chromosome 6. The C-terminal domain is the primary determinant of histone H1 binding to chromatin in vivo. The C-terminal region also shows the most differences in aa sequence between the H1 histone variants H1.0/1/2/3/4/5.

**Synonyms:**

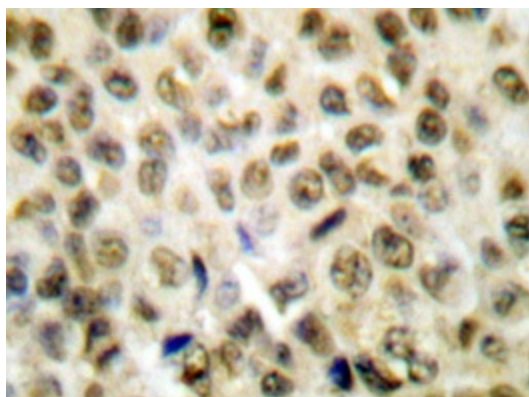
H1F0, H1FV, Histone H1', Histone H1(0)

**Protein Families:**

Druggable Genome

**Product images:**


Western blot (WB) analyzes of Histone H1 antibody (Cat.-No.: AP20238PU-N) in extracts from HUVEC cells.



Immunohistochemistry analyzes of Histone H1 antibody (AP20238PU-N) in paraffin-embedded human lung carcinoma tissue.