

Product datasheet for **AP20235PU-S**

HDAC3 Rabbit Polyclonal Antibody

Product data:

Product Type:	Primary Antibodies
Applications:	IF, IHC, WB
Recommended Dilution:	Western blot: 1/500-1/1000. Immunohistochemistry on paraffin sections: 1/50-1/200. Immunofluorescence: 1/50-1/200.
Reactivity:	Human, Mouse, Rat
Host:	Rabbit
Clonality:	Polyclonal
Specificity:	This antibody detects endogenous levels of SMAP45 protein.
Formulation:	Phosphate buffered saline (PBS) with 0.05% sodium azide, approx. pH 7.2 State: Aff - Purified State: Liquid purified Ig fraction
Concentration:	1.0 mg/ml
Purification:	Affinity-chromatography using epitope-specific immunogen; purity is > 95% (by SDS-PAGE)
Conjugation:	Unconjugated
Storage:	Store undiluted at 2-8°C for one month or (in aliquots) at -20°C for longer. Avoid repeated freezing and thawing.
Stability:	Shelf life: one year from despatch.
Predicted Protein Size:	~ 50 kDa
Gene Name:	histone deacetylase 3
Database Link:	Entrez Gene 15183 Mouse Entrez Gene 84578 Rat Entrez Gene 8841 Human O15379



[View online »](#)

Background:

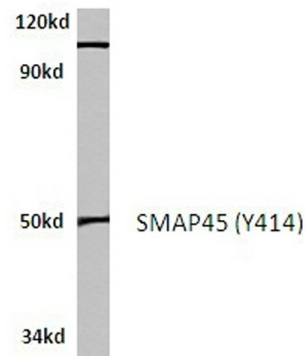
Histones play a critical role in transcriptional regulation, cell cycle progression, and developmental events. Histone acetylation/deacetylation alters chromosome structure and affects transcription factor access to DNA. The protein encoded by this gene belongs to the histone acetylase/acuc/apha family. It has histone deacetylase activity and represses transcription when tethered to a promoter. It may participate in the regulation of transcription through its binding with the zinc-finger transcription factor YY1. This protein can also down-regulate p53 function and thus modulate cell growth and apoptosis. This gene is regarded as a potential tumor suppressor gene.

Synonyms:

Histone deacetylase 3, RPD3-2, SMAP45, HD3

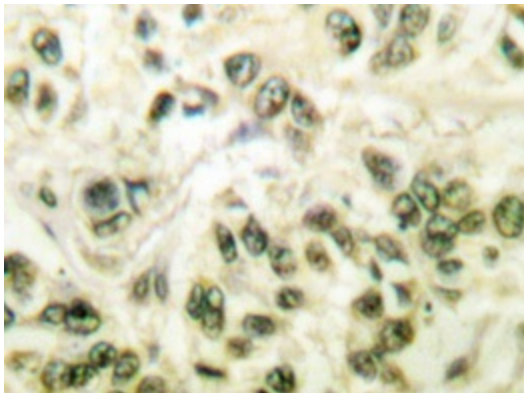
Protein Families:

Druggable Genome, Transcription Factors

Product images:

PC12 whole cell lysate
SMAP45 (Y414) pAb at 1:500 dilution

Western blot (WB) analysis of SMAP45 antibody (Cat.-No.: [AP20235PU-N]) in extracts from PC12 cells.



Immunohistochemistry analyzes of SMAP45 antibody ([AP20235PU-N]) in paraffin-embedded human breast carcinoma tissue.