

Product datasheet for **AP20229PU-M**

Fos B (FOSB) Rabbit Polyclonal Antibody

Product data:

| | |
|-------------------------|--|
| Product Type: | Primary Antibodies |
| Applications: | IF, IHC, WB |
| Recommended Dilution: | Western blot: 1/500-1/1000. Immunofluorescence: 1/500-1/1000. |
| Reactivity: | Human, Mouse |
| Host: | Rabbit |
| Clonality: | Polyclonal |
| Specificity: | This antibody detects endogenous levels of FosB protein. |
| Formulation: | Phosphate buffered saline (PBS) with 0.05% sodium azide, approx. pH 7.2 State: Aff - Purified State: Liquid purified Ig fraction |
| Concentration: | 1.0 mg/ml |
| Purification: | Affinity-chromatography using epitope-specific immunogen; purity is > 95% (by SDS-PAGE) |
| Conjugation: | Unconjugated |
| Storage: | Store undiluted at 2-8°C for one month or (in aliquots) at -20°C for longer. Avoid repeated freezing and thawing. |
| Stability: | Shelf life: one year from despatch. |
| Predicted Protein Size: | ~ 35 kDa |
| Gene Name: | FosB proto-oncogene, AP-1 transcription factor subunit |
| Database Link: | Entrez Gene 14282 Mouse Entrez Gene 2354 Human P53539 |



[View online »](#)

Background:

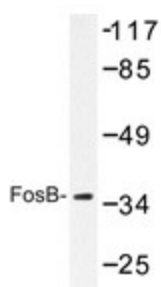
Fos and Jun dimerize to form Activator Protein-1 (AP-1), a transcriptional factor that binds to the 12-O-tetradecanoylphorbol 13-acetate (TPA) response element (TRE) of several cellular and viral genes including human collagenase, metallothionein II, a stromelysin, interleukin 2, SV40 and polyoma. Fos and Jun contain the 'leucine-zipper' motif that allows for dimerization and an adjacent basic domain required for biological activity. The functionally active form of Fos is in a heterodimer with a member of the Jun family. While Jun family members can form functional homodimers, studies indicate that Fos family members do not self-associate and therefore do not bind DNA on their own. The various dimers differ in their ability to transactivate AP-1 dependent genes.

Synonyms:

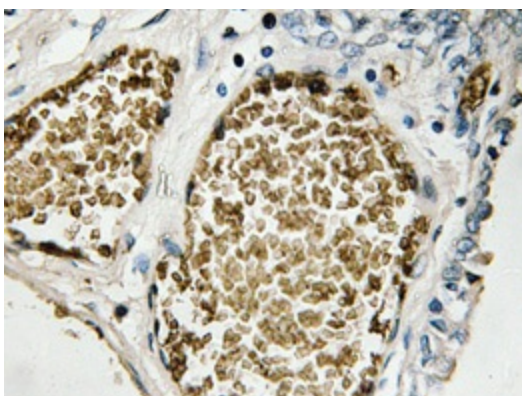
G0S3, GOS3, GOSB

Protein Families:

Druggable Genome, Transcription Factors

Product images:


Western blot analyzes of FosB antibody ([AP20229PU-N]) in extracts from COS7 cells.



Immunohistochemistry analyzes of FosB antibody ([AP20229PU-N]) in paraffin-embedded human prostate carcinoma tissue.