

## Product datasheet for **AP20226PU-N**

### Ephrin B1 (EFNB1) Rabbit Polyclonal Antibody

#### Product data:

Product Type:	Primary Antibodies
Applications:	WB
Recommended Dilution:	<b>Western blot:</b> 1/500-1/1000.
Reactivity:	Human, Mouse, Rat
Host:	Rabbit
Clonality:	Polyclonal
Specificity:	This antibody detects endogenous levels of Ephrin-B1 protein.
Formulation:	Phosphate buffered saline (PBS) with 0.05% sodium azide, approx. pH 7.2 State: Aff - Purified State: Liquid Ig fraction
Concentration:	1.0 mg/ml
Purification:	Affinity-purified from rabbit antiserum by affinity-chromatography using epitope-specific immunogen, purity is > 95% (by SDS-PAGE)
Conjugation:	Unconjugated
Storage:	Store undiluted at 2-8°C for one month or (in aliquots) at -20°C for longer. Avoid repeated freezing and thawing.
Stability:	Shelf life: one year from despatch.
Predicted Protein Size:	~ 38 kDa
Gene Name:	ephrin B1
Database Link:	<a href="#">Entrez Gene 13641 Mouse</a> <a href="#">Entrez Gene 25186 Rat</a> <a href="#">Entrez Gene 1947 Human P98172</a>
Background:	Ephrins are the ligands which bind to the Eph receptor subfamily, the largest group of the receptor tyrosine kinase family. Both ephrins and Eph receptors are broadly expressed through the ectoderm, mesoderm, and endoderm of vertebrate embryos. Two classes of ephrins exist: Class A ephrins are tethered to the membrane by a GPI linkage and bind primarily to EphA receptors; Class B ephrins contain a membrane-spanning region and bind predominantly to EphB receptors. Ephrin B1 may play a role in constraining the orientation of longitudinally projecting axons.



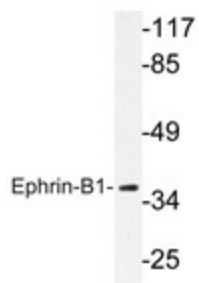
[View online »](#)

**Synonyms:** EFL-3, EFNB1, EFL3, EPLG2, LERK2, ELK-L, LERK-2, CEK5-L

**Protein Families:** Druggable Genome, Transmembrane

**Protein Pathways:** Axon guidance

### Product images:



Western blot analysis of Ephrin-B1 antibody (AP20226PU-N) in extracts from COS7 cells.