

## Product datasheet for **AP20225PU-S**

### Eph receptor A2 (EPHA2) (+EPHA3/4) Rabbit Polyclonal Antibody

#### Product data:

Product Type:	Primary Antibodies
Applications:	IF, WB
Recommended Dilution:	<b>Western blot:</b> 1/500-1/1000. <b>Immunofluorescence:</b> 1/50-1/200.
Reactivity:	Human, Rat
Host:	Rabbit
Clonality:	Polyclonal
Specificity:	This antibody detects endogenous levels of EphA2/3/4 protein.
Formulation:	Phosphate buffered saline (PBS) with 15 mM sodium azide, approx. pH 7.2 State: Aff - Purified State: Liquid purified Ig fraction
Concentration:	1.0 mg/ml
Purification:	Affinity-purified from rabbit antiserum by affinity-chromatography using epitope-specific immunogen, purity is > 95% (by SDS-PAGE)
Conjugation:	Unconjugated
Storage:	Store undiluted at 2-8°C for one month or (in aliquots) at -20°C for longer. Avoid repeated freezing and thawing.
Stability:	Shelf life: one year from despatch.
Predicted Protein Size:	~ 112 kDa
Gene Name:	EPH receptor A2
Database Link:	<a href="#">Entrez Gene 366492 Rat</a> <a href="#">Entrez Gene 1969 Human P29317</a>
Background:	EPH and EPH-related receptors have been implicated in mediating developmental events, particularly in the nervous system. Receptors in the EPH subfamily typically have a single kinase domain and an extracellular region containing a Cys-rich domain and 2 fibronectin type III repeats. The ephrin receptors are divided into 2 groups based on the similarity of their extracellular domain sequences and their affinities for binding ephrin-A and ephrin-B ligands.
Synonyms:	Ephrin type-A receptor 2, Epithelial cell kinase, Eph receptor A2

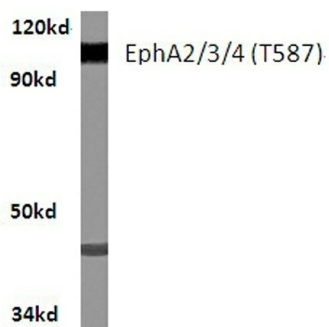


[View online »](#)

Protein Families: Druggable Genome, Protein Kinase, Transmembrane

Protein Pathways: Axon guidance

### Product images:



Western blot (WB) analysis of EphA2/3/4 antibody (Cat.-No.: [AP20225PU-N]) in extracts from HeLa cells.

HeLa whole cell lysate  
EphA2/3/4(T587) pAb at 1:500 dilution