

Product datasheet for **AP20224PU-M**

EP300 Rabbit Polyclonal Antibody

Product data:

Product Type:	Primary Antibodies
Applications:	IHC, WB
Recommended Dilution:	Western blot: 1/500-1/1000. Immunohistochemistry on Paraffin Sections: 1/50-1/200.
Reactivity:	Human
Host:	Rabbit
Clonality:	Polyclonal
Specificity:	This antibody detects endogenous levels of EP300 / P300 protein.
Formulation:	Phosphate buffered saline (PBS), pH~7.2 State: Aff - Purified State: Liquid purified Ig fraction (>95% pure by SDS-PAGE) Preservative: 0.05% Sodium Azide
Concentration:	1.0 mg/ml
Purification:	Affinity Chromatography using epitope-specific immunogen
Conjugation:	Unconjugated
Storage:	Store undiluted at 2-8°C for one month or (in aliquots) at -20°C for longer. Avoid repeated freezing and thawing.
Stability:	Shelf life: one year from despatch.
Predicted Protein Size:	~264 kDa
Gene Name:	E1A binding protein p300
Database Link:	Entrez Gene 2033 Human Q09472
Background:	KAT3B / p300 is a transcriptional adapter protein (300 kDa) which is characterized by three cysteine and histidine rich regions and its C-terminus specifically binds the adenovirus E1A protein. KAT3B and associated proteins are components of TATA-binding protein (TBP) complexes. Protein kinase A mediated CREB phosphorylation results in the binding of CREB to a 265 kDa nuclear protein designated KAT3A / CBP (for CREB-binding protein). KAT3B and KAT3A are homologous to each other.



[View online »](#)

Synonyms: p300 HAT, KAT3B, Histone acetyltransferase p300

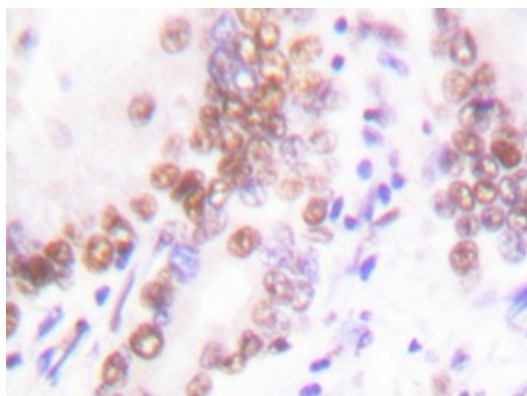
Protein Families: Druggable Genome, Transcription Factors

Protein Pathways: Adherens junction, Cell cycle, Huntington's disease, Jak-STAT signaling pathway, Long-term potentiation, Melanogenesis, Notch signaling pathway, Pathways in cancer, Prostate cancer, Renal cell carcinoma, TGF-beta signaling pathway, Wnt signaling pathway

Product images:



Western blot analysis with EP300 / P300 antibody (Cat.-No [AP20224PU-N]) in extracts from MDA-MB-435 cells.



Immunohistochemistry analysis with EP300 / P300 antibody (Cat.-No [AP20224PU-N]) in paraffin-embedded human lung carcinoma tissue.