

## Product datasheet for **AP20221PU-M**

### DDX3 (DDX3X) Rabbit Polyclonal Antibody

#### Product data:

Product Type:	Primary Antibodies
Applications:	IHC, WB
Recommended Dilution:	<b>Western blot:</b> 1/500-1/1000. <b>Immunohistochemistry on paraffin sections</b> 1/50-1/200.
Reactivity:	Human, Mouse, Rat
Host:	Rabbit
Clonality:	Polyclonal
Specificity:	This antibody detects endogenous levels of DDX3 protein.
Formulation:	Phosphate buffered saline (PBS) with 0.05% sodium azide, approx. pH 7.2 State: Aff - Purified State: Liquid purified Ig fraction
Concentration:	1.0 mg/ml
Purification:	Affinity-chromatography using epitope-specific immunogen, purity is > 95% (by SDS-PAGE)
Conjugation:	Unconjugated
Storage:	Store undiluted at 2-8°C for one month or (in aliquots) at -20°C for longer. Avoid repeated freezing and thawing.
Stability:	Shelf life: one year from despatch.
Predicted Protein Size:	~ 75 kDa
Gene Name:	DEAD-box helicase 3, X-linked
Database Link:	<a href="#">Entrez Gene 13205 Mouse</a> <a href="#">Entrez Gene 317335 Rat</a> <a href="#">Entrez Gene 1654 Human</a> <a href="#">O00571</a>



[View online »](#)

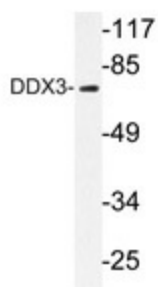
**Background:** DDX3 contains all of the motifs of the DEAD box family of RNA helicases, including the Asp/Glu/Ala/Asp sequence that gives the protein family its name and distinguishes it from other RNA helicases. DDX3 is localized to the X chromosome and has a highly conserved functional homolog (DBY) on the Y chromosome. DDX3 is thought to be involved in RNA splicing, RNA transport, and translation initiation. It is also involved in cell growth control and is deregulated in hepatitis virus associated hepatocellular carcinoma. Recent experiments suppressing DDX3 expression blocked HIV1 RNA export from the nucleus, suggesting that DDX3 functions as a shuttling protein that transports the HIV1 protein Rev and its cofactor CRM1 from the nucleus to the cytoplasm.

**Synonyms:** DBX, DDX3, HLP2, Helicase-like protein 2, DEAD box X isoform, DEAD3

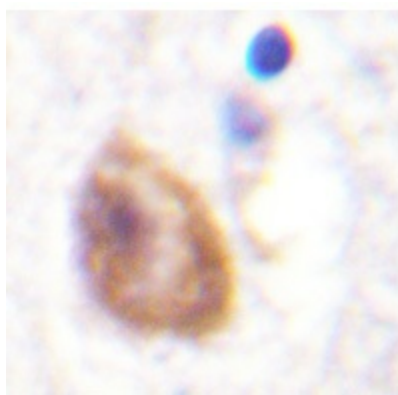
**Protein Families:** ES Cell Differentiation/IPS

**Protein Pathways:** RIG-I-like receptor signaling pathway

### Product images:



Western blot analysis of DDX3 antibody ([AP20221PU-N]) in extracts from HepG2 cells.



Immunohistochemistry analyzes of DDX3 antibody ([AP20221PU-N]) in paraffin-embedded human brain tissue.