

Product datasheet for **AP20219PU-M**

MCSF Receptor (CSF1R) (531-580) Rabbit Polyclonal Antibody

Product data:

Product Type:	Primary Antibodies
Applications:	IF, IHC, WB
Recommended Dilution:	Immunofluorescence: 1/50-1/200. Immunohistochemistry on Paraffin Sections: 1/50-1/200. Western Blot: 1/500-1/1000.
Reactivity:	Human, Mouse, Rat
Host:	Rabbit
Clonality:	Polyclonal
Immunogen:	Synthetic peptide corresponding to amino acids 531-580 of Human c-Fms
Specificity:	This antibody detects endogenous levels of c-Fms protein.
Formulation:	Phosphate buffered saline (PBS), pH~7.2 State: Aff - Purified State: Liquid purified Ig fraction (> 95% pure by SDS-PAGE) Preservative: 0.05% Sodium Azide
Concentration:	1.0 mg/ml
Purification:	Affinity Chromatography using epitope-specific immunogen
Conjugation:	Unconjugated
Storage:	Store undiluted at 2-8°C for one month or (in aliquots) at -20°C for longer. Avoid repeated freezing and thawing.
Stability:	Shelf life: one year from despatch.
Predicted Protein Size:	Predicted: 108 kDa; Observed: 130 kDa
Gene Name:	colony stimulating factor 1 receptor
Database Link:	<u>Entrez Gene 12978 Mouse</u> <u>Entrez Gene 307403 Rat</u> <u>Entrez Gene 1436 Human P07333</u>



[View online »](#)

Background:

This protein tyrosine kinase transmembrane receptor is the receptor for colony stimulating factor 1, a cytokine which controls the production, differentiation, and function of macrophages. This receptor mediates most if not all of the biological effects of this cytokine. Ligand binding activates the receptor kinase through a process of oligomerization and transphosphorylation. The encoded protein is a member of the CSF1/PDGF receptor family of tyrosine protein kinases and contains 5 immunoglobulin like C2 type domains. CD115 is expressed by cells of the monocytic lineage and by progenitor cells. Mutations in this gene have been associated with a predisposition to myeloid malignancy.

Synonyms:

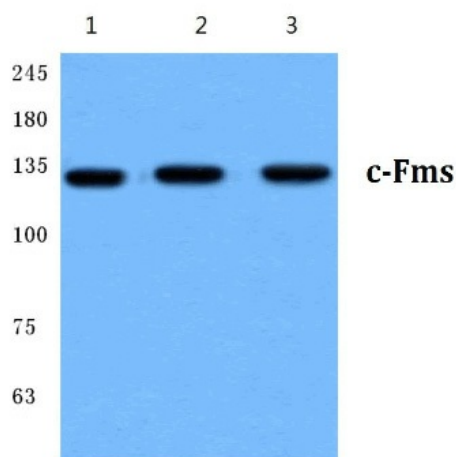
CSF-1-R, Fms proto-oncogene, c-fms, CSF1R, FMS, Macrophage colony-stimulating factor 1 receptor

Protein Families:

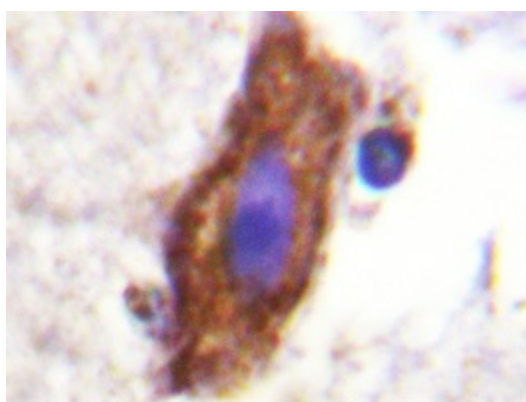
Druggable Genome, Protein Kinase, Transmembrane

Protein Pathways:

Cytokine-cytokine receptor interaction, Endocytosis, Hematopoietic cell lineage, Pathways in cancer

Product images:


Western Blot analysis of c-Fms Antibody at 1/500 dilution: Lane 1: HeLa cell lysate. Lane 1: Raw264.7 cell lysate. Lane 1: PC12 cell lysate.



Immunohistochemistry analysis of c-Fms Antibody in paraffin-embedded human brain tissue.