

## Product datasheet for **AP20215PU-N**

### RAF1 Rabbit Polyclonal Antibody

#### Product data:

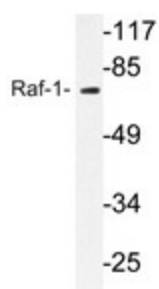
Product Type:	Primary Antibodies
Applications:	IHC, WB
Recommended Dilution:	<b>Western blot:</b> 1/500-1/1000. <b>Immunohistochemistry on paraffin sections:</b> 1/50-1/200.
Reactivity:	Human, Mouse, Rat
Host:	Rabbit
Clonality:	Polyclonal
Specificity:	This antibody detects endogenous levels of C-Raf protein.
Formulation:	Phosphate buffered saline (PBS) with 0.05% sodium azide, approx. pH 7.2 State: Aff - Purified State: Liquid purified Ig fraction
Concentration:	1.0 mg/ml
Purification:	Affinity-chromatography using epitope-specific immunogen; purity is > 95% (by SDS-PAGE)
Conjugation:	Unconjugated
Storage:	Store undiluted at 2-8°C for one month or (in aliquots) at -20°C for longer. Avoid repeated freezing and thawing.
Stability:	Shelf life: one year from despatch.
Predicted Protein Size:	~ 73 kDa
Gene Name:	Raf-1 proto-oncogene, serine/threonine kinase
Database Link:	<a href="#">Entrez Gene 24703 Rat</a> <a href="#">Entrez Gene 110157 Mouse</a> <a href="#">Entrez Gene 5894 Human</a> <a href="#">P04049</a>



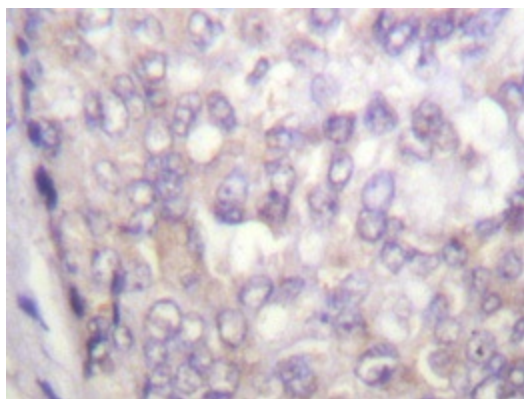
[View online »](#)

<b>Background:</b>	The Raf family of serine/threonine-specific kinases is comprised of three members (A-Raf, B-Raf, and c-Raf) that play a critical role in regulating cell growth and differentiation, and couple growth factor receptor stimulation to nuclear transcription factors via the Ras/mitogen-activated protein kinase (MAPK) pathway. c-Raf kinase (also known as Raf-1) is a key 74 kDa signal transducer of multiple extracellular stimuli that is regulated by several pathways, and that once activated, phosphorylates MEK which in turn phosphorylates ERK. Activation of Raf kinase activity is induced by several events including phosphorylation at several sites and binding of GTP-bound Ras and/or 14-3-3 proteins. The c-Raf antibody is useful as a positive control and for measuring total c-Raf protein levels to compare signals obtained with the c-Raf PSSAs.
<b>Synonyms:</b>	C-RAF, Raf-1, cRaf
<b>Protein Families:</b>	Druggable Genome, Protein Kinase
<b>Protein Pathways:</b>	Acute myeloid leukemia, B cell receptor signaling pathway, Bladder cancer, Chemokine signaling pathway, Chronic myeloid leukemia, Colorectal cancer, Endometrial cancer, ErbB signaling pathway, Fc epsilon RI signaling pathway, Fc gamma R-mediated phagocytosis, Focal adhesion, Gap junction, Glioma, GnRH signaling pathway, Insulin signaling pathway, Long-term depression, Long-term potentiation, MAPK signaling pathway, Melanogenesis, Melanoma, Natural killer cell mediated cytotoxicity, Neurotrophin signaling pathway, Non-small cell lung cancer, Pancreatic cancer, Pathways in cancer, Progesterone-mediated oocyte maturation, Prostate cancer, Regulation of actin cytoskeleton, Renal cell carcinoma, T cell receptor signaling pathway, Vascular smooth muscle contraction, VEGF signaling pathway

### Product images:



Western blot analysis of C-Raf antibody (AP20215PU-N) in extracts from 293 cells.



Immunohistochemistry analyzes of C-Raf antibody (AP20215PU-N) in paraffin-embedded human breast carcinoma tissue.