

## Product datasheet for **AP20213PU-M**

### **Apc6 (CDC16) Rabbit Polyclonal Antibody**

#### **Product data:**

Product Type:	Primary Antibodies
Applications:	IF, IHC, WB
Recommended Dilution:	<b>Immunofluorescence:</b> 1/50-1/200. <b>Immunohistochemistry on Paraffin sections:</b> 1/50-1/200. <b>Western blot:</b> 1/500-1/1000.
Reactivity:	Human, Mouse
Host:	Rabbit
Clonality:	Polyclonal
Specificity:	This antibody detects endogenous levels of Cdc16 protein.
Formulation:	Phosphate buffered saline (PBS) with 0.05% Sodium azide, approx. pH 7.2 State: Aff - Purified State: Liquid purified Ig fraction
Concentration:	1.0 mg/ml
Purification:	Affinity chromatography using epitope-specific immunogen (> 95% pur; by SDS-PAGE)
Conjugation:	Unconjugated
Storage:	Store undiluted at 2-8°C for one month or (in aliquots) at -20°C for longer. Avoid repeated freezing and thawing.
Stability:	Shelf life: one year from despatch.
Predicted Protein Size:	~ 72 kDa
Gene Name:	cell division cycle 16
Database Link:	<a href="#">Entrez Gene 69957 Mouse</a> <a href="#">Entrez Gene 8881 Human</a> <a href="#">Q13042</a>



[View online »](#)

**Background:**

Cell cycle events are regulated by the sequential activation and deactivation of cyclin dependent kinases (Cdks) and by the proteolysis of cyclins. The cell division cycle (Cdc) genes are required at various points in the cell cycle. Cell division cycle protein 16 homolog (CDC16) is a component of the APC (anaphase-promoting complex), which is composed of eight proteins and functions as a protein ubiquitin ligase. The APC complex is a cyclin degradation system that governs exit from mitosis. Each component protein of the APC complex is highly conserved among eukaryotic organisms.

**Synonyms:**

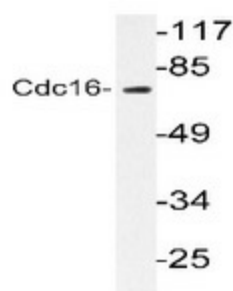
ANAPC6, Cell division cycle protein 16 homolog, CDC16Hs

**Protein Families:**

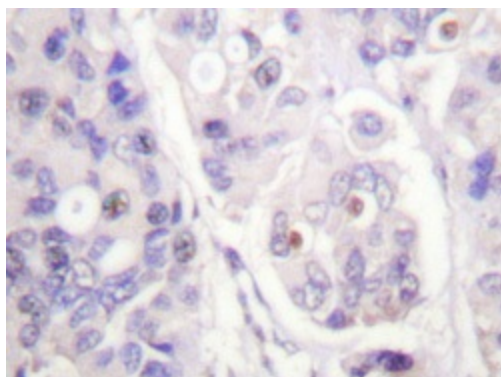
Druggable Genome

**Protein Pathways:**

Cell cycle, Oocyte meiosis, Progesterone-mediated oocyte maturation, Ubiquitin mediated proteolysis

**Product images:**


Western blot analysis of CDC16 in extracts from HuvEc cells using CDC16 / APC6 antibody (Cat.-No. [AP20213PU-N]).



Immunohistochemical analysis of human breast carcinoma tissue (Formalin-fixed Paraffin-embedded) using CDC16 / APC6 antibody (Cat.-No. [AP20213PU-N]).