

Product datasheet for **AP20212PU-N**

ICAM3 Rabbit Polyclonal Antibody

Product data:

Product Type:	Primary Antibodies
Applications:	IF, WB
Recommended Dilution:	Western blot: 1/500-1/1000. Immunofluorescence: 1/50-1/200.
Reactivity:	Human
Host:	Rabbit
Clonality:	Polyclonal
Specificity:	This antibody detects endogenous levels of CD50 protein.
Formulation:	Phosphate buffered saline (PBS) with 0.05% sodium azide, approx. pH 7.2 State: Aff - Purified State: Liquid purified Ig fraction
Concentration:	1.0 mg/ml
Purification:	Affinity-chromatography using epitope-specific immunogen; purity is > 95% (by SDS-PAGE)
Conjugation:	Unconjugated
Storage:	Store undiluted at 2-8°C for one month or (in aliquots) at -20°C for longer. Avoid repeated freezing and thawing.
Stability:	Shelf life: one year from despatch.
Predicted Protein Size:	~ 59 kDa
Gene Name:	intercellular adhesion molecule 3
Database Link:	Entrez Gene 3385 Human P32942
Background:	All ICAM proteins are type I transmembrane glycoproteins, contain 2-9 immunoglobulin-like C2-type domains, and bind to the leukocyte adhesion LFA1 protein. ICAM3 is constitutively and abundantly expressed by all leucocytes and may be the most important ligand for LFA1 in the initiation of the immune response. It functions not only as an adhesion molecule, but also as a potent signalling molecule. Upon stimulation by a physiological stimulus it becomes rapidly and transiently phosphorylated on serine residues. N-glycosylated; glycans consist of a mixture of tri- and tetra-antennary complex-type chains and high-mannose chains.



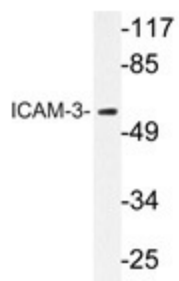
[View online >](#)

Synonyms: ICAM-3, ICAM-R, CDw50

Protein Families: ES Cell Differentiation/IPS, Transmembrane

Protein Pathways: Cell adhesion molecules (CAMs)

Product images:



Western blot analysis of CD50 antibody (AP20212PU-N) in extracts from NIH/3T3 cells.