

Product datasheet for **AP20211PU-N**

CD5 Rabbit Polyclonal Antibody

Product data:

Product Type:	Primary Antibodies
Applications:	WB
Recommended Dilution:	Western Blot: 1/500-1/1000.
Reactivity:	Human, Mouse
Host:	Rabbit
Clonality:	Polyclonal
Specificity:	This antibody detects endogenous levels of CD5 protein.
Formulation:	Phosphate buffered saline (PBS), pH~7.2 containing 0.05% Sodium Azide as preservative. State: Aff - Purified State: Liquid purified Ig fraction (> 95% pure by SDS-PAGE)
Concentration:	1.0 mg/ml
Purification:	Affinity Chromatography using epitope-specific immunogen.
Conjugation:	Unconjugated
Storage:	Store the antibody undiluted at 2-8°C for one month or (in aliquots) at -20°C for longer. Avoid repeated freezing and thawing.
Stability:	Shelf life: one year from despatch.
Predicted Protein Size:	~ 60 kDa
Gene Name:	CD5 molecule
Database Link:	Entrez Gene 12507 Mouse Entrez Gene 921 Human P06127



[View online »](#)

Background:

In humans, CD5 is a 67kDa T lymphocyte single chain transmembrane glycoprotein. It is present on all mature T lymphocytes, on most thymocytes and on many T cell leukemias and lymphomas. It reacts with a subpopulation of activated B cells. CD5/Lyt1 antigen is a monomeric type I transmembrane glycoprotein expressed on thymocytes, T lymphocytes, and a subset of B lymphocytes, but not on natural killer (NK) cells. It has been identified as the major ligand of the B cell antigen CD72. The frequency of CD5+ B cells exhibits strain dependent variation, and the phenotypic, anatomical, functional, developmental, and pathological characteristics of the CD5+ B cells suggest that they may represent a distinct lineage, known as B1 cells. Binding of CD5 on the T cell surface can augment alloantigen or mitogen induced lymphocyte proliferation and induces increased cytosolic free calcium, IL2 secretion, and IL2R expression. It has been proposed that CD5 negatively regulates signal transduction mediated by the T cell and B cell receptors.

Synonyms:

CD5, LEU1

Protein Families:

Druggable Genome, Transmembrane

Protein Pathways:

Hematopoietic cell lineage

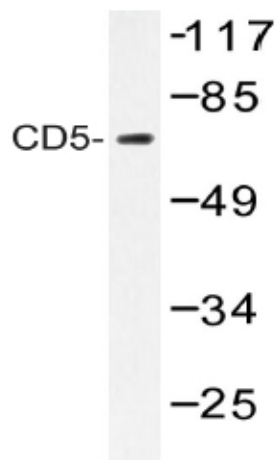
Product images:

Figure 1. Western blot (WB) analysis of CD5 antibody (Cat.-No.: AP20211PU-N) in extracts from 283 cells.