

## Product datasheet for **AP20205PU-M**

### **Apc1 (ANAPC1) Rabbit Polyclonal Antibody**

#### **Product data:**

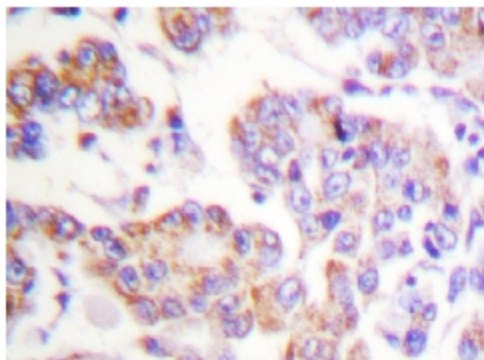
<b>Product Type:</b>	Primary Antibodies
<b>Applications:</b>	IF, IHC
<b>Recommended Dilution:</b>	<b>Immunohistochemistry on paraffin sections</b> 1/50-1/200. <b>Immunofluorescence:</b> 1/50-1/200.
<b>Reactivity:</b>	Human, Mouse, Rat
<b>Host:</b>	Rabbit
<b>Clonality:</b>	Polyclonal
<b>Specificity:</b>	This antibody antibody detects endogenous levels of APC1 protein.
<b>Formulation:</b>	Phosphate buffered saline (PBS), pH~7.2 containing 0.05% Sodium Azide as preservative. State: Aff - Purified State: Liquid purified Ig fraction (> 95% pure by SDS-PAGE) .
<b>Concentration:</b>	1.0 mg/ml
<b>Purification:</b>	Affinity Chromatography using epitope-specific immunogen.
<b>Conjugation:</b>	Unconjugated
<b>Storage:</b>	Store the antibody undiluted at 2-8°C for one month or (in aliquots) at -20°C for longer. Avoid repeated freezing and thawing.
<b>Stability:</b>	Shelf life: one year from despatch.
<b>Gene Name:</b>	anaphase promoting complex subunit 1
<b>Database Link:</b>	<a href="#">Entrez Gene 17222 Mouse</a> <a href="#">Entrez Gene 311412 Rat</a> <a href="#">Entrez Gene 64682 Human</a> <a href="#">Q9H1A4</a>
<b>Background:</b>	APC1 is 1 of at least 11 subunits of the anaphase promoting complex (APC), which functions at the metaphase to anaphase transition of the cell cycle and is regulated by spindle checkpoint proteins. The APC is an E3 ubiquitin ligase that targets cell cycle regulatory proteins for degradation by the proteasome, thereby allowing progression through the cell cycle.
<b>Synonyms:</b>	Anaphase-promoting complex subunit 1, TSG24, MCPR
<b>Protein Families:</b>	Druggable Genome, Stem cell - Pluripotency



[View online »](#)

**Protein Pathways:** Cell cycle, Oocyte meiosis, Progesterone-mediated oocyte maturation, Ubiquitin mediated proteolysis

**Product images:**



Immunohistochemistry Analysis: [AP20205PU-N]  
APC1 antibody staining of Paraffin-Embedded  
Human breast carcinoma tissue.