

Product datasheet for **AP20204PU-N**

ATRIP Rabbit Polyclonal Antibody

Product data:

Product Type:	Primary Antibodies
Applications:	IF, IHC, WB
Recommended Dilution:	Western blot: 1/500-1/1000. Immunofluorescence: 1/50-1/200. Immunohistochemistry on Paraffin Sections: 1/50-1/200.
Reactivity:	Human, Mouse, Rat
Host:	Rabbit
Clonality:	Polyclonal
Immunogen:	Synthetic peptide, corresponding to amino acids 30-76 of Human ATRIP
Specificity:	This antibody antibody detects endogenous levels of ATRIP protein.
Formulation:	Phosphate buffered saline (PBS), pH~7.2 containing 0.05% Sodium Azide as preservative State: Aff - Purified State: Liquid purified Ig fraction (> 95% pure by SDS-PAGE)
Concentration:	1.0 mg/ml
Purification:	Affinity Chromatography using epitope-specific immunogen
Conjugation:	Unconjugated
Storage:	Store the antibody undiluted at 2-8°C for one month or (in aliquots) at -20°C for longer. Avoid repeated freezing and thawing.
Stability:	Shelf life: one year from despatch.
Predicted Protein Size:	~ 80 kDa
Gene Name:	ATR interacting protein
Database Link:	Entrez Gene 235610 Mouse Entrez Gene 301014 Rat Entrez Gene 84126 Human Q8WXE1



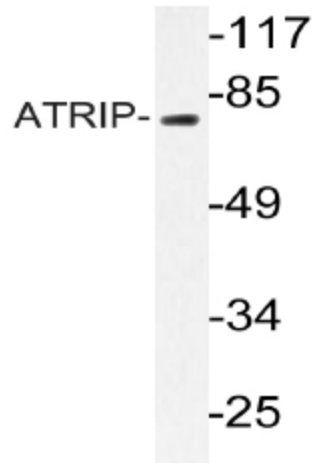
[View online »](#)

Background:

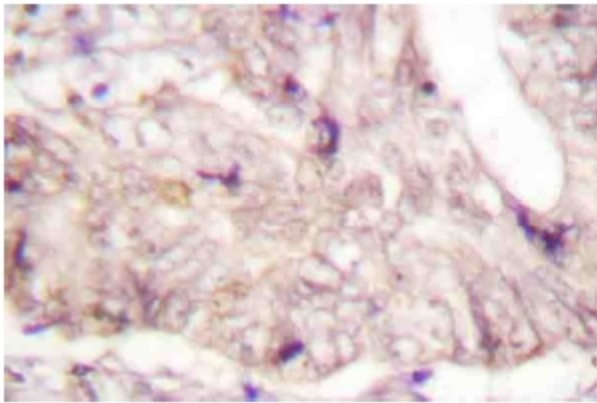
The product of the ATRIP gene is an essential component of the DNA damage checkpoint, and binds to single stranded DNA coated with replication protein A that accumulates at sites of DNA damage. The encoded protein interacts with the ataxia telangiectasia and Rad3 related protein, a checkpoint kinase, resulting in accumulation of the kinase at intranuclear foci induced by DNA damage. Multiple transcript variants encoding different isoforms have been found for this gene.

Synonyms:

ATR-interacting protein

Product images:

Western blot (WB) analysis of ATRIP antibody in extracts from NIH/3T3 cells treated with PMA 125ng/ml 30'.



Immunohistochemistry Analysis: ATRIP antibody staining of Paraffin-Embedded Human lung colon carcinoma tissue.