

Product datasheet for **AP20202PU-S**

GSK3 alpha (GSK3A) (+ beta) Rabbit Polyclonal Antibody

Product data:

Product Type:	Primary Antibodies
Applications:	IHC, WB
Recommended Dilution:	Western blot: 1/500-1/1000. Immunohistochemistry on paraffin sections 1/50-1/200.
Reactivity:	Human, Mouse, Rat
Host:	Rabbit
Clonality:	Polyclonal
Specificity:	This antibody antibody detects endogenous levels of GSK3-alpha/beta protein.
Formulation:	Phosphate buffered saline (PBS), pH~7.2 containing 0.05% Sodium Azide as preservative. State: Aff - Purified State: Liquid purified Ig fraction (> 95% pure by SDS-PAGE) .
Concentration:	1.0 mg/ml
Purification:	Affinity Chromatography using epitope-specific immunogen.
Conjugation:	Unconjugated
Storage:	Store the antibody undiluted at 2-8°C for one month or (in aliquots) at -20°C for longer. Avoid repeated freezing and thawing.
Stability:	Shelf life: one year from despatch.
Predicted Protein Size:	~ 46,51 kDa
Gene Name:	glycogen synthase kinase 3 alpha
Database Link:	Entrez Gene 50686 Rat Entrez Gene 606496 Mouse Entrez Gene 2931 Human P49840



[View online »](#)

Background:

Glycogen synthase kinase 3 alpha belongs to the Ser/Thr family of protein kinases, Cdc2/cdkx subfamily; GSK3 subfamily. It is implicated in the hormonal control of several regulatory proteins including glycogen synthase, myb, and the transcription factor c jun. GSK3 phosphorylates glycogen synthase and thereby inactivates it. Insulin stimulates the dephosphorylation of glycogen synthase at the sites phosphorylated by GSK3 and subsequently inhibits GSK3 acutely leading to the stimulation of glycogen synthesis. GSK3 signaling is performed by two isoforms, GSK3 alpha and GSK3 beta. The two isoforms share 97% sequence similarity within their catalytic domains. GSK3 has also been shown to play a role in protein synthesis, cell adhesion, cell proliferation, cell differentiation, microtubule dynamics and cell motility.

Synonyms:

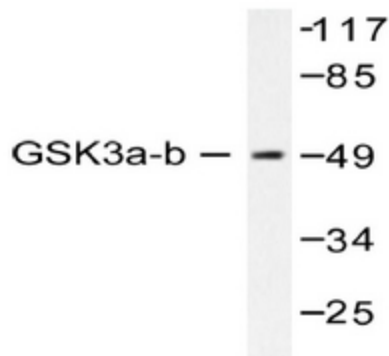
Glycogen synthase kinase-3 alpha, GSK3A, GSK-3 alpha, Factor A

Protein Families:

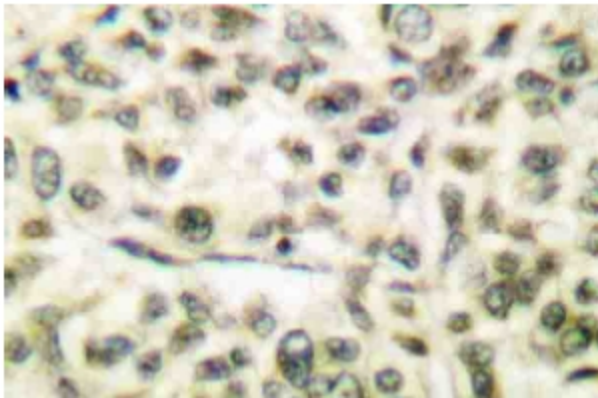
Druggable Genome, Protein Kinase

Protein Pathways:

Chemokine signaling pathway

Product images:

Western blot (WB) analysis of GSK3a/b antibody (Cat.-No.: [AP20202PU-N]) in extracts from 293 cells treated with TNF-a 20ng/ml 30mins.



Immunohistochemistry Analysis: [AP20202PU-N] GSK3a/b antibody staining of Paraffin-Embedded Human breast carcinoma tissue.