

Product datasheet for **AP20196PU-M**

NF-kB p65 (RELA) Rabbit Polyclonal Antibody

Product data:

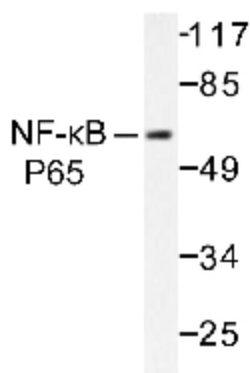
Product Type:	Primary Antibodies
Applications:	IHC, IP, WB
Recommended Dilution:	Western blot: 1/500-1/1000. Immunohistochemistry on paraffin sections 1/50-1/200. Immunoprecipitation: 1/50-1/200.
Reactivity:	Human, Mouse, Rat
Host:	Rabbit
Clonality:	Polyclonal
Specificity:	This antibody detects endogenous levels of NFκB-p65 protein.
Formulation:	Phosphate buffered saline (PBS), pH~7.2 containing 0.05% Sodium Azide as preservative. State: Aff - Purified State: Liquid purified Ig fraction (> 95% pure by SDS-PAGE) .
Concentration:	1.0 mg/ml
Purification:	Affinity Chromatography using epitope-specific immunogen.
Conjugation:	Unconjugated
Storage:	Store the antibody undiluted at 2-8°C for one month or (in aliquots) at -20°C for longer. Avoid repeated freezing and thawing.
Stability:	Shelf life: one year from despatch.
Predicted Protein Size:	~ 60, 75 kDa
Gene Name:	RELA proto-oncogene, NF-kB subunit
Database Link:	Entrez Gene 19697 Mouse Entrez Gene 309165 Rat Entrez Gene 5970 Human Q04206
Background:	p65 is a subunit of the nuclear factor kappa B. The transcription factor NFκB is widely recognized as a critical mediator of immune and inflammatory responses. In most cell types, NFκB is found in the cytoplasm where it is associated with an inhibitory protein in many tissues. A high proportion of spontaneous NIH/3T3 transformants overexpress c-Met and by transfection analysis the c-Met proto-oncogene has been shown to exhibit transforming activity.



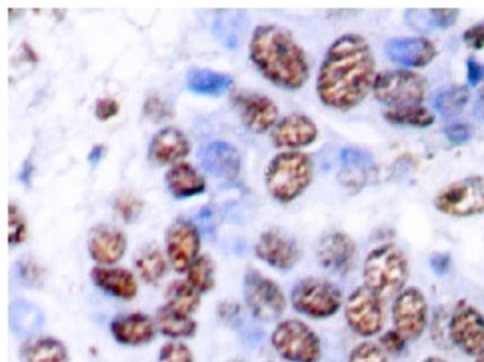
[View online »](#)

Synonyms:	NF kappa B p65, NFκB p65, Transcription factor p65, Rel A, NFKB3
Protein Families:	Druggable Genome, Transcription Factors
Protein Pathways:	Acute myeloid leukemia, Adipocytokine signaling pathway, Apoptosis, B cell receptor signaling pathway, Chemokine signaling pathway, Chronic myeloid leukemia, Cytosolic DNA-sensing pathway, Epithelial cell signaling in Helicobacter pylori infection, MAPK signaling pathway, Neurotrophin signaling pathway, NOD-like receptor signaling pathway, Pancreatic cancer, Pathways in cancer, Prostate cancer, RIG-I-like receptor signaling pathway, Small cell lung cancer, T cell receptor signaling pathway, Toll-like receptor signaling pathway

Product images:



Western blot (WB) analysis of NFκB-p65 antibody (Cat.-No.: [AP20196PU-N]) in extracts from HeLa cells.



Immunohistochemistry Analysis: [AP20196PU-N] NFκB-p65 antibody staining of Paraffin-Embedded Human breast carcinoma tissue.