

## Product datasheet for **AP20195PU-S**

### **E Cadherin (CDH1) Rabbit Polyclonal Antibody**

#### **Product data:**

Product Type:	Primary Antibodies
Applications:	IF, IHC, IP, WB
Recommended Dilution:	<b>Western blot:</b> 1/500-1/1000. <b>Immunoprecipitation:</b> 1/50-1/200. <b>Immunofluorescence:</b> 1/50-1/200. <b>Immunohistochemistry on Paraffin Sections:</b> 1/50-1/200.
Reactivity:	Human, Mouse, Rat
Host:	Rabbit
Clonality:	Polyclonal
Immunogen:	Synthetic peptide, corresponding to amino acids 840-880 of Human E-cadherin.
Specificity:	This antibody antibody detects endogenous levels of E-Cadherin protein.
Formulation:	PBS with 0.02% Sodium Azide, 50% glycerol, pH7.2 State: Aff - Purified State: Liquid purified Ig fraction (> 95% pure by SDS-PAGE)
Concentration:	1.0 mg/ml
Purification:	Affinity Chromatography using epitope-specific immunogen
Conjugation:	Unconjugated
Storage:	Store undiluted at 2-8°C for one month or (in aliquots) at -20°C for longer. Avoid repeated freezing and thawing.
Stability:	Shelf life: one year from despatch.
Predicted Protein Size:	~ 98, 130 kDa
Gene Name:	cadherin 1
Database Link:	<a href="#">Entrez Gene 12550 Mouse</a> <a href="#">Entrez Gene 83502 Rat</a> <a href="#">Entrez Gene 999 Human P12830</a>



[View online »](#)

**Background:**

Cadherins are members of a multigene family of single chain glycoprotein receptors mediating calcium dependent cell-cell adhesion. They play an important role in the growth and development of cells via the mechanisms of control of tissue architecture and the maintenance of tissue integrity. Cadherins are expressed in a tissue specific manner and are required for assembly of cells into solid tissue. Individual cadherin molecules are known to co-operate with each other to form a linear cell adhesion zipper. In adhesion junctions cadherins are bound to beta and gamma catenins which in turn bind to alpha catenin, an actin binding protein. Cadherins play an important part in tumor invasion and metastasis.

**Synonyms:**

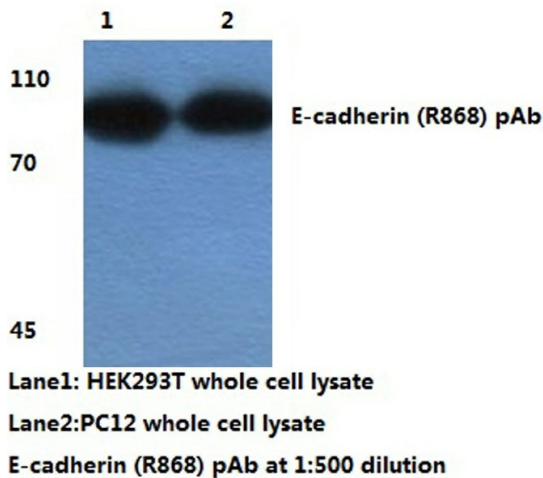
Epithelial cadherin, E-cadherin, Uvomorulin, CAM 120/80, CDH1, CDHE, UVO

**Protein Families:**

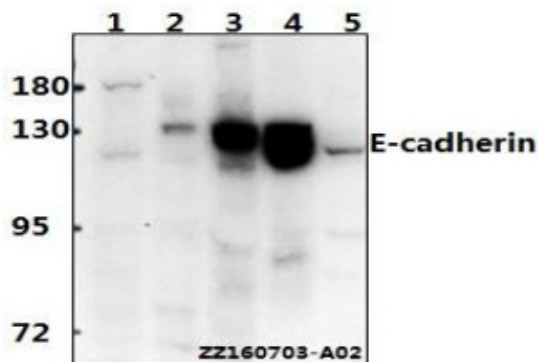
Druggable Genome, ES Cell Differentiation/IPS, Transmembrane

**Protein Pathways:**

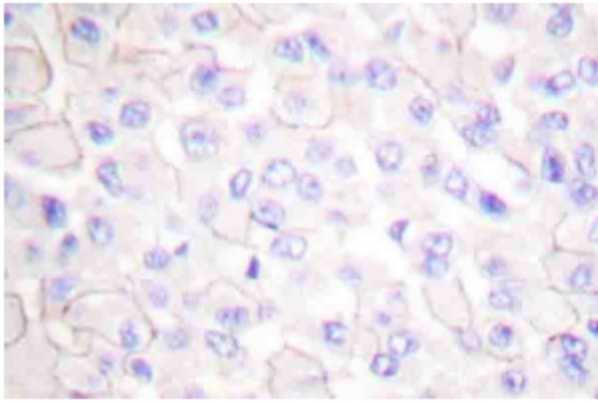
Adherens junction, Bladder cancer, Cell adhesion molecules (CAMs), Endometrial cancer, Melanoma, Pathogenic Escherichia coli infection, Pathways in cancer, Thyroid cancer

**Product images:**


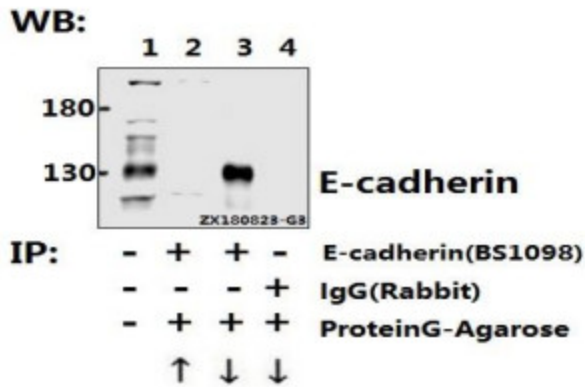
Western blot analysis of E-cadherin (pArg868) antibody Cat.-No [AP20195PU-N].



Western blot (WB) analysis of E-cadherin (R868) polyclonal antibody at 1:500 dilution Lane1: HCT116 whole cell lysate (40ug) Lane2: AML-12 whole cell lysate (40ug) Lane3: PC12 whole cell lysate (40ug) Lane4: L02 whole cell lysate (40ug) Lane5: HEK293T whole cell lysate (40ug)



Immunohistochemistry analysis of E-cadherin (pArg868) antibody Cat.-No [AP20195PU-N] in paraffin-embedded human breast carcinoma tissue.



Immunoprecipitation of HepG2 cell lysate using E-cadherin (R868) pAb (Sepharose Bead Conjugate) #BD0048 (lane 2 and lane 3) and Nonspecific IgG Control (Sepharose Bead Conjugate) #BD0048 (lane 4) . Lane1 is 30% input.